

FLUSH PANEL

Product Features

- Ideal for transition roofs
- Corrective leveled for superior flatness
- Available with up to 3 stiffener beads
- Rounded interlock leg provides improved flush fit
- .040 aluminum panel

Material

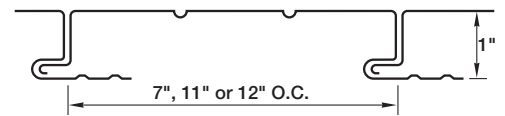
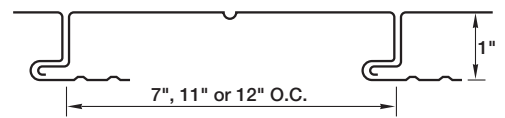
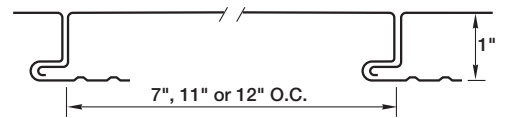
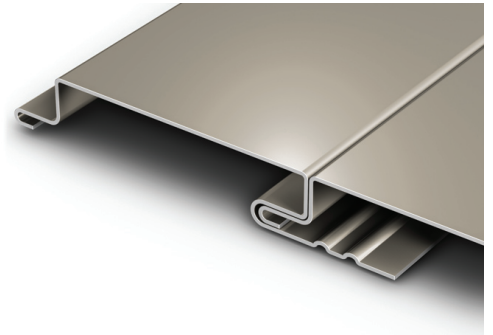
- 37 stocked colors (24 gauge steel)
- 13 stocked colors (22 gauge steel)
- 36 stocked colors (.032 aluminum)
- 18 stocked colors (.040 aluminum)
- 20 year non-prorated finish warranty
- Galvalume Plus available

Florida Building Product Approvals

- .032 & .040 Aluminum, 22 & 24 ga. Steel: FL Prod. Approv. #7547

*Limited Color Availability.

**18" O.C. available for limited applications. Consult factory for details. 12" O.C. has reduced fastening flange.



SPECS: 7", 11", 13" OR 18" O.C.**
1" HIGH



www.pac-clad.com | 800-PAC-CLAD

©2008-2009 Petersen Aluminum Corporation