

# HIGHLINE S1

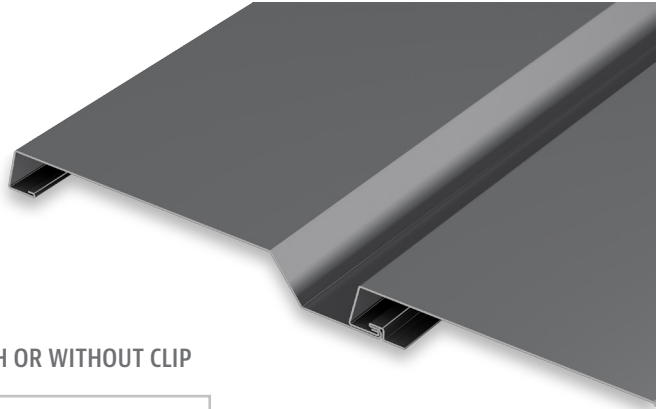
## PRECISION SERIES WALL PANELS

### MATERIALS

.032 aluminum	24 gauge steel
.040 aluminum	22 gauge steel
.050 aluminum	

### SPECS

11.356" Wide	1-3/8" High
--------------	-------------



### AVAILABLE WITH OR WITHOUT CLIP



### PRODUCT FEATURES

- ▶ No-clip panel or clip installation for expansion/contraction
- ▶ Multiple rib patterns provide a variety of looks and design options
- ▶ Panel depth of 1-3/8"
- ▶ Cost-effective installation
- ▶ Horizontal or vertical installation
- ▶ Panel lengths: 30' maximum for steel; 22' maximum for aluminum; longer lengths available on clip panels; 4' min. steel and aluminum

### MATERIAL

- ▶ 43 stocked colors (24 gauge steel)
- ▶ 36 stocked colors (.032 aluminum)
- ▶ 15 stocked colors (22 gauge steel)
- ▶ 22 stocked colors (.040 aluminum)
- ▶ 29 stocked colors (.050 aluminum)
- ▶ Galvalume Plus available

### TESTS

- ▶ ASTM E330
- ▶ ASTM E283
- ▶ ASTM E331
- ▶ ASTM 1592

### FLORIDA BUILDING PRODUCT APPROVALS

Please refer to [pac-clad.com](http://pac-clad.com) or your local factory for specific product approval numbers for Precision Series panels.

Note: Line drawings may not be to scale.