

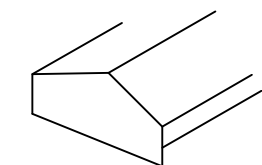
REFERENCE DETAIL:

PAC SS RIDGE VENT

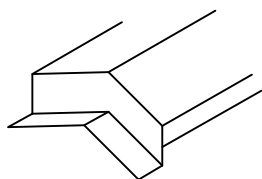
SLOPE TO SLOPE, SHINGLED VERSION
FOR HIGH SNOW LOAD CONDITIONS

U.S. PATENT # 8,075,376 B1

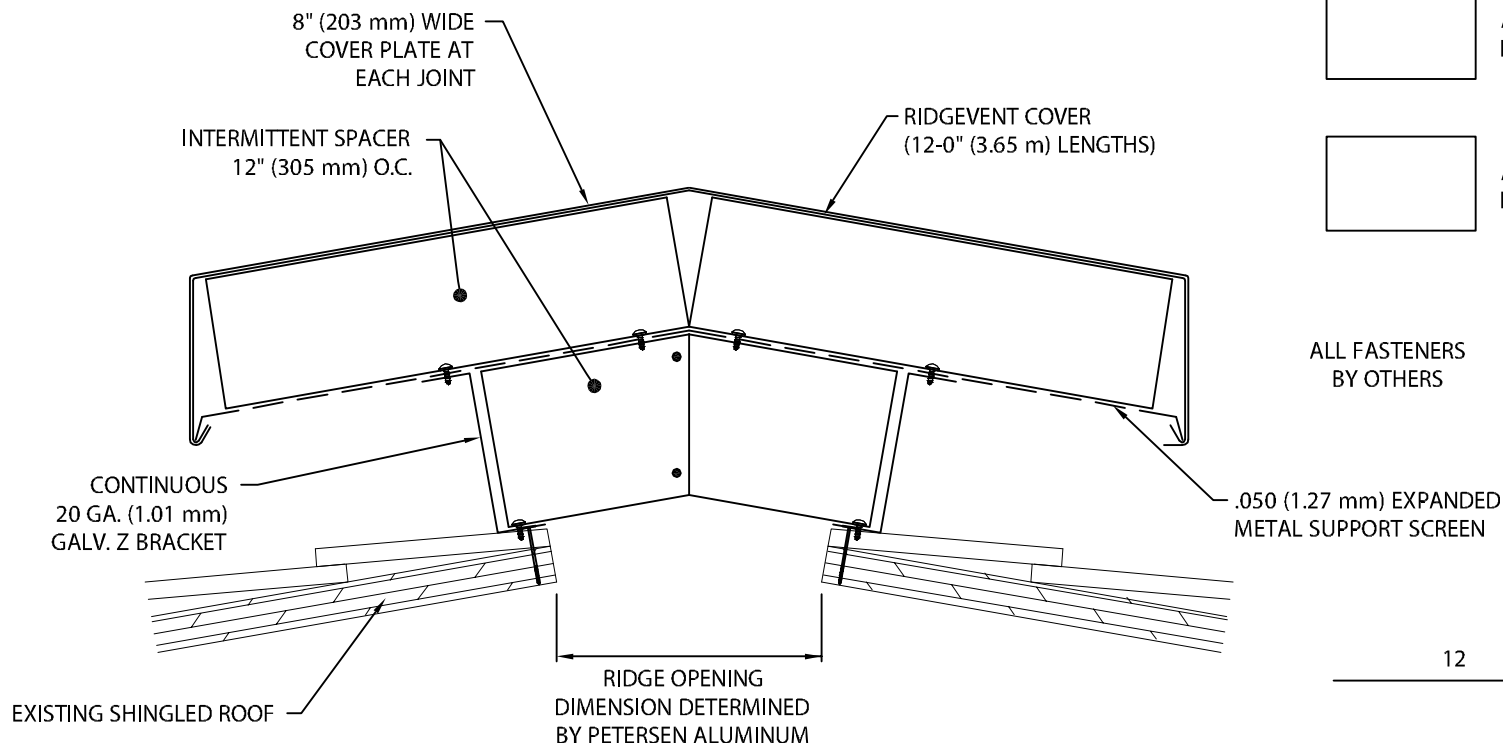
ENDCAPS



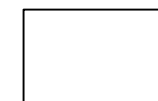
STYLE A



STYLE B



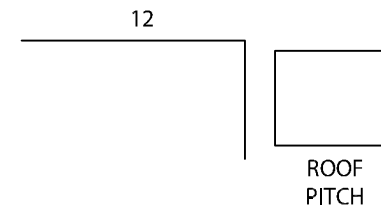
ACTUAL LINEAL FOOTAGE OF RIDGE



ACTUAL LINEAL FOOTAGE OF EAVE

ALL FASTENERS BY OTHERS

.050 (1.27 mm) EXPANDED METAL SUPPORT SCREEN



ROOF PITCH

FASCIA IS TO BE INSTALLED PER SPECIFICATIONS AND PETERSEN ALUMINUM'S INSTALLATION INSTRUCTIONS DWG. # 41124-14959

Fabrication will proceed only after receipt of signed print approval.

Print Approval:

Architect and/or contractor shall verify all dimensions, sizes and quantities. All products to be installed in strict accordance with Petersen Aluminum's printed instructions.

Approved by: _____

Date: _____

VENTILATION TYPE:

Vented Nailbase _____ Air Space

Attic _____ Attic Floor Square Footage

_____ Ridge Beam Width If Applicable

COVER:

.050" (1.27 mm) Aluminum .063" (1.60 mm) Aluminum

Other _____

Color: _____ Finish: _____

PROJECT:

ARCHITECT:

CONTRACTOR:

REPRESENTATIVE:

QUANTITIES:

_____ Lineal Feet (12'-0" (3.65 m) Lengths)

_____ End Cap (12" (305 mm) Lengths)

_____ Style A _____ Style B



Phone: 800-323-1960
Fax: 800-722-7150
www.pac-clad.com
E-mail: info@pac-clad.com

DATE: 08/13/13

SHT.# ___ OF ___

DRN BY: JJC

CKD BY: SAK

DWG# 41024-14960

