

# HIGHLINE S1

## PRECISION SERIES WALL PANELS

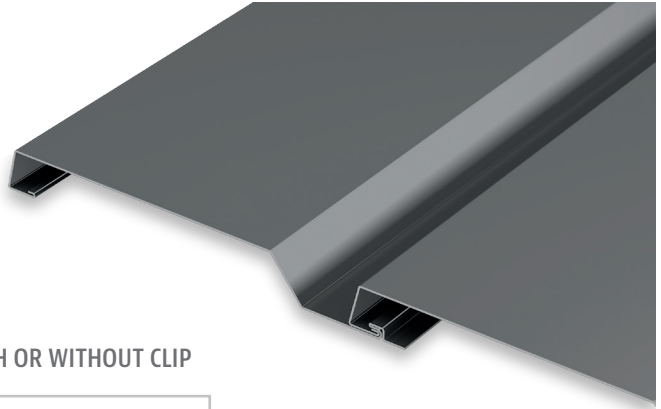
### MATERIALS

.032 aluminum	24 gauge steel
.040 aluminum	22 gauge steel
.050 aluminum	

### SPECS

11.356" Wide      1-3/8" High

Note: Minimum panel length is 5'



### AVAILABLE WITH OR WITHOUT CLIP



### PRODUCT FEATURES

- ▶ No-clip panel, or clip installation for expansion/contraction
- ▶ Panel depths of 7/8" or 1-3/8"
- ▶ Cost-effective installation
- ▶ Horizontal or vertical installation
- ▶ Panel lengths:  
30' maximum for steel;  
22' maximum for aluminum on the thru-fastened leg; longer lengths available on clip panels

### MATERIAL

- ▶ 43 stocked colors (24 gauge steel)
- ▶ 36 stocked colors (.032 aluminum)
- ▶ 16 Stocked colors (22 gauge steel)
- ▶ 22 stocked colors (.040 aluminum)
- ▶ 29 stocked colors (.050 aluminum)
- ▶ Galvalume Plus available

### TESTS

- ▶ ASTM E330
- ▶ ASTM E283
- ▶ ASTM E331
- ▶ AAMA 501.1-05-B1, B2, C2, S1
- ▶ ASTM 1592

### FLORIDA BUILDING PRODUCT APPROVALS

Please refer to [pac-clad.com](http://pac-clad.com) or your local factory for specific product approval numbers for Precision Series panels.

Note: Line drawings may not be to scale.