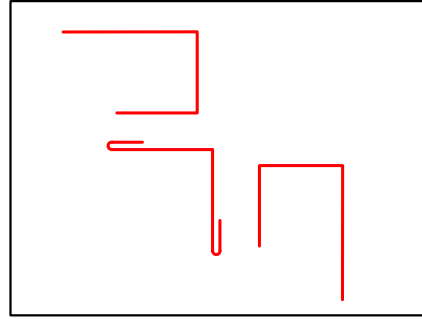


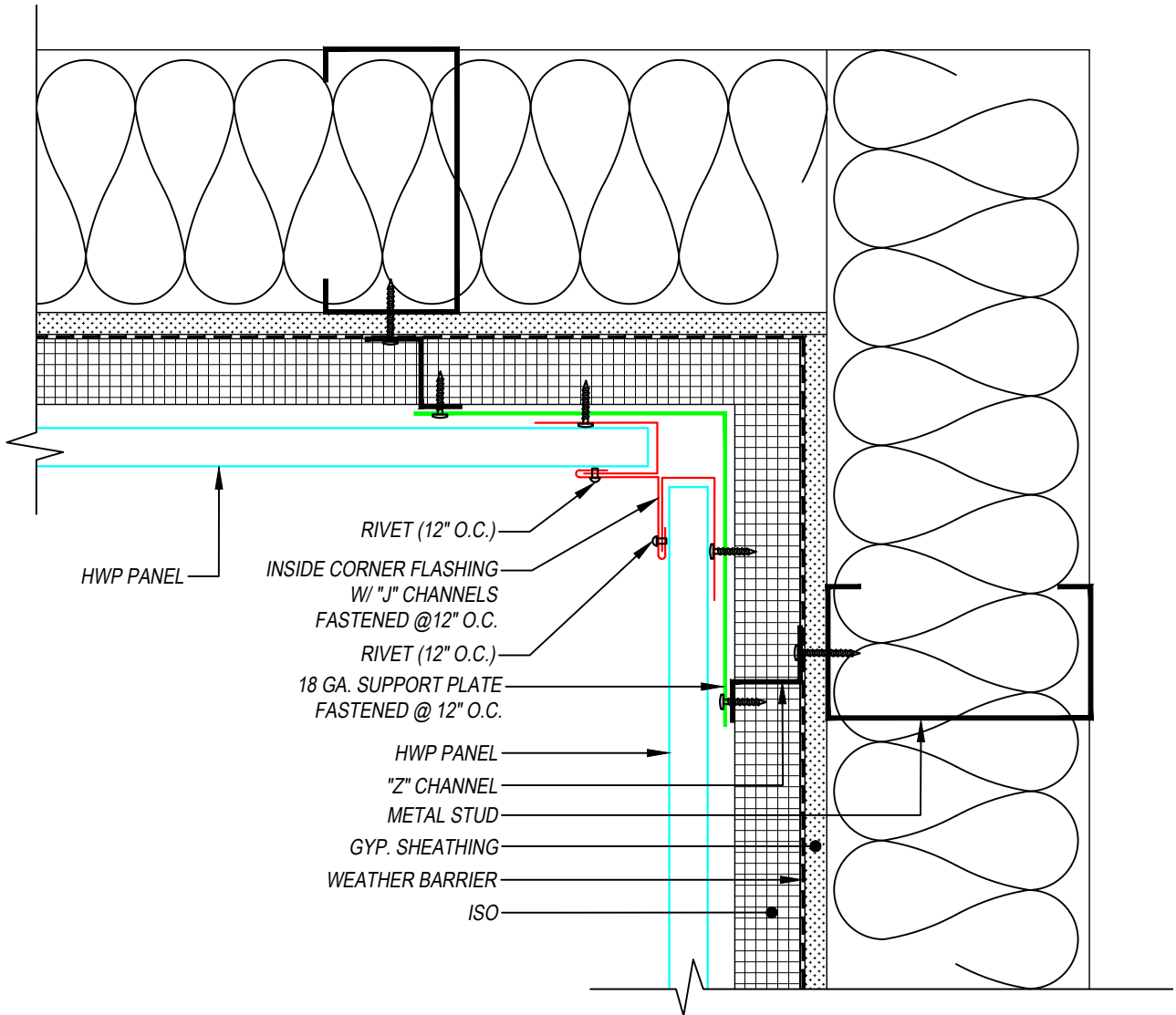
# INSIDE CORNER DETAIL

**NOTES:**

- This detail drawing also applies to PAC-CLAD Precision Series Highline and Box Rib panels.
- Panel dimensions that might appear on this document apply to HWP only.
- Consult PAC rep for assistance.



FLASHING COMPONENTS



HWP PANEL

- RIVET (12" O.C.)
- INSIDE CORNER FLASHING  
W/ "J" CHANNELS  
FASTENED @ 12" O.C.
- RIVET (12" O.C.)
- 18 GA. SUPPORT PLATE  
FASTENED @ 12" O.C.

- HWP PANEL
- "Z" CHANNEL
- METAL STUD
- GYP. SHEATHING
- WEATHER BARRIER
- ISO

PLAN VIEW