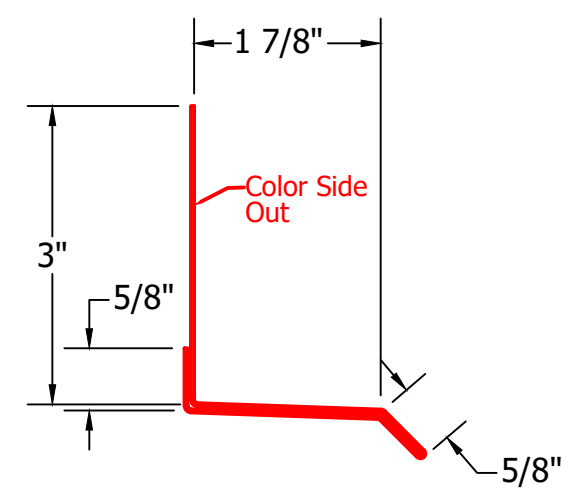


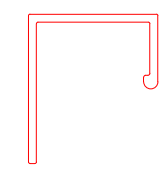
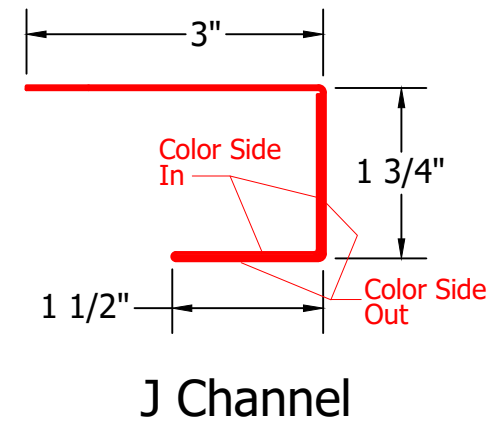
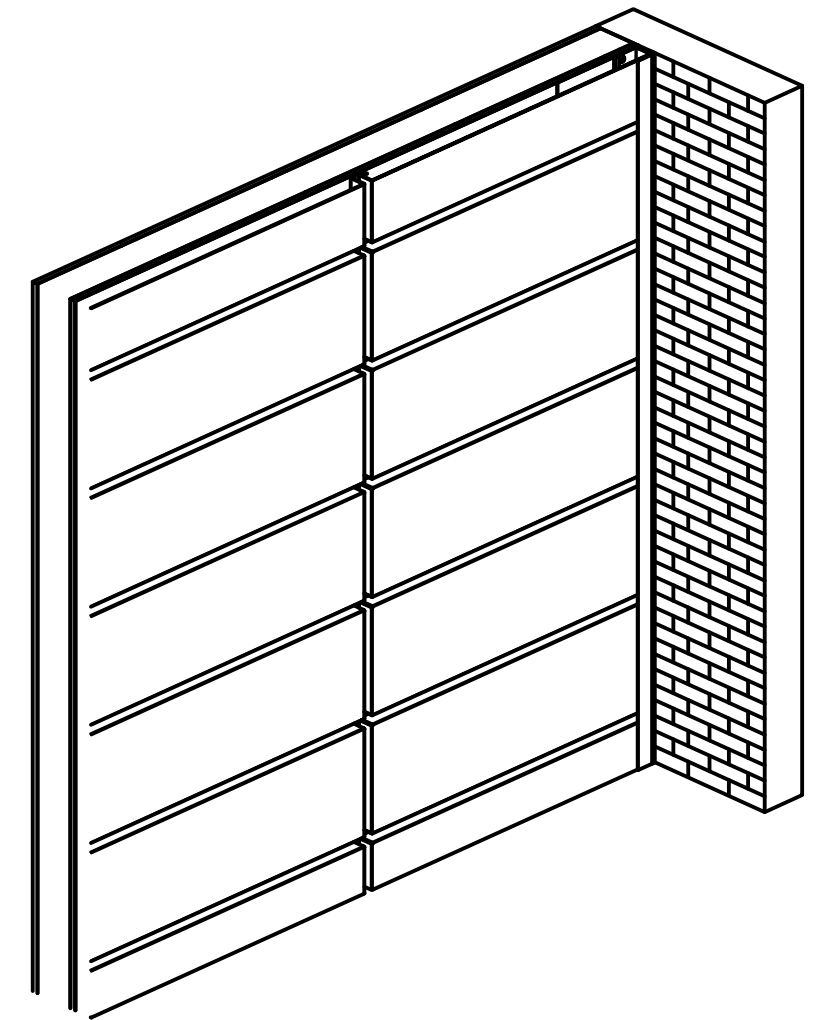
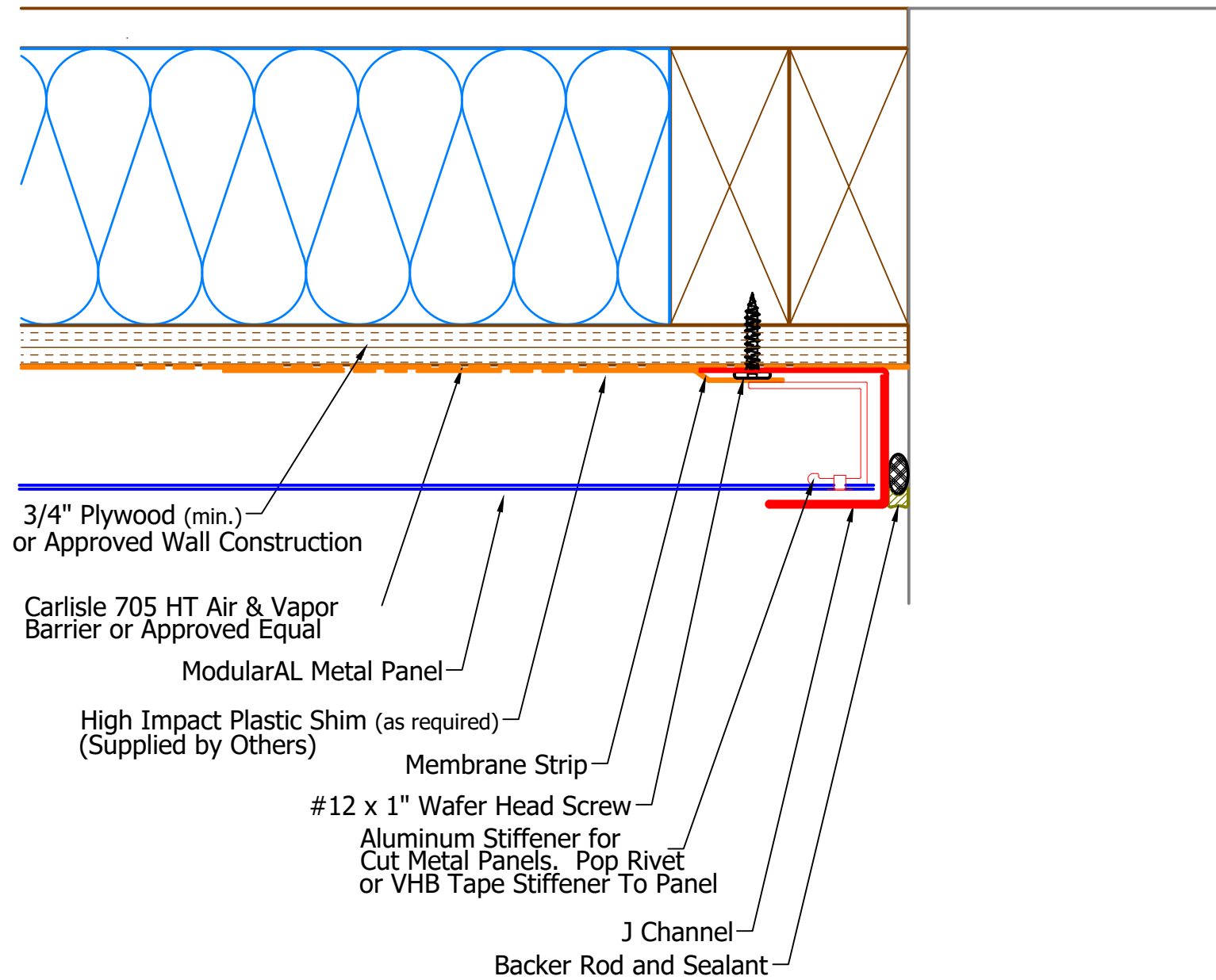
Starter Cleat



Base Trim

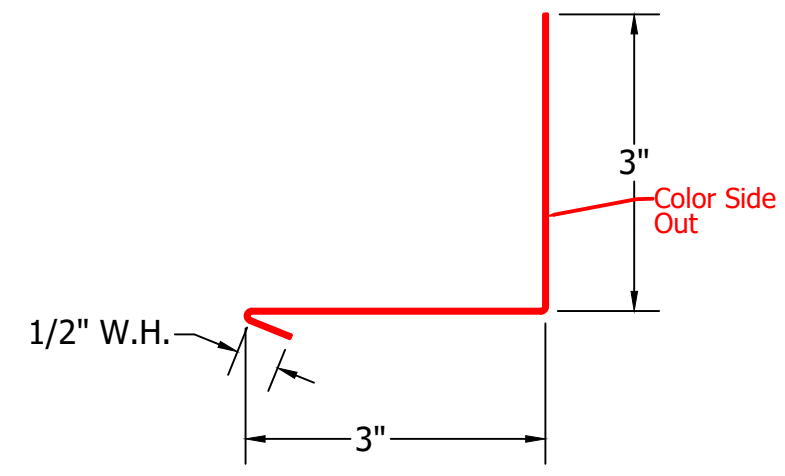
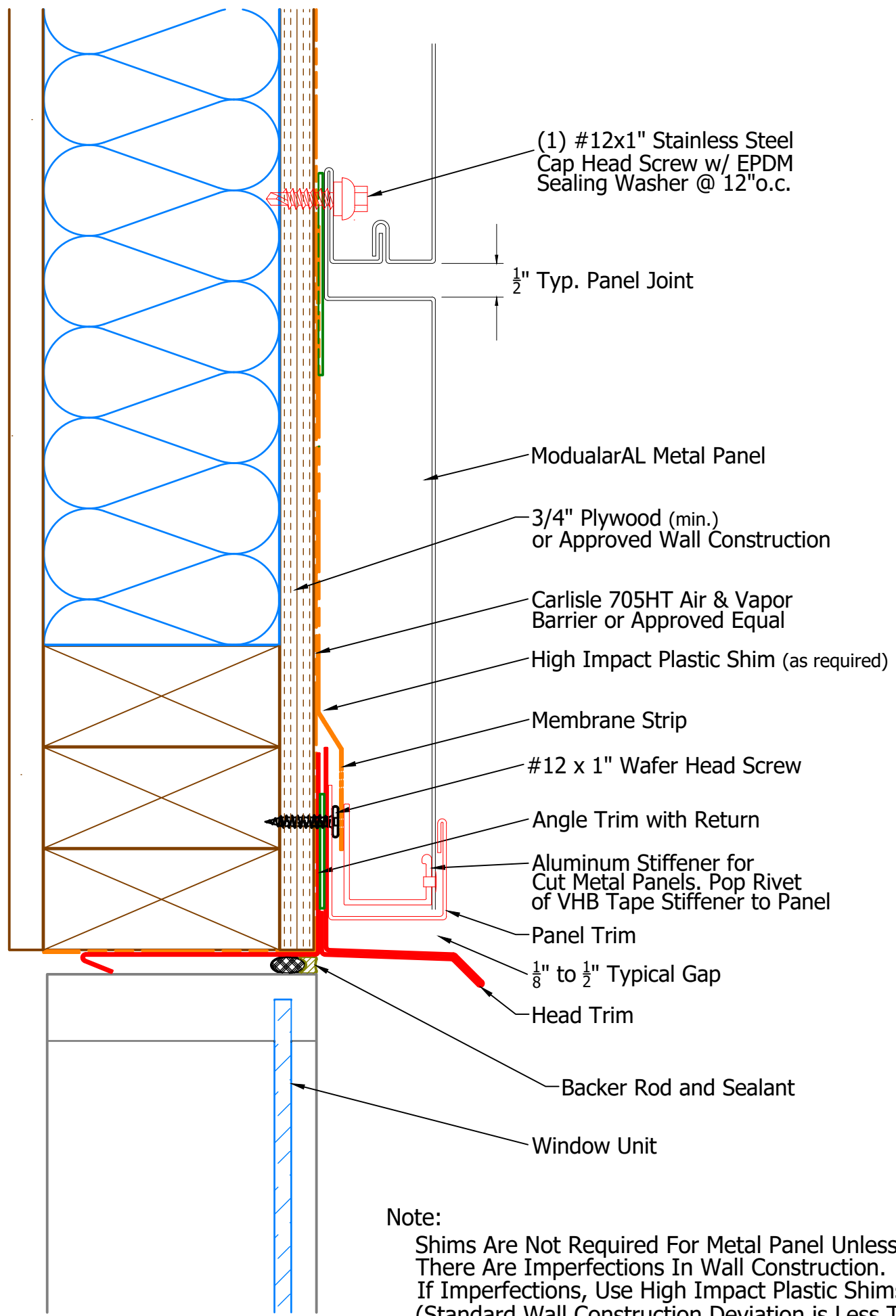
Note:
 Shims Are Not Required For Metal Panel Unless There Are Imperfections In Wall Construction. If Imperfections, Use High Impact Plastic Shims. (Standard Wall Construction Deviation is Less Than 1/4" In 20'-0" In All Directions).

Base Detail

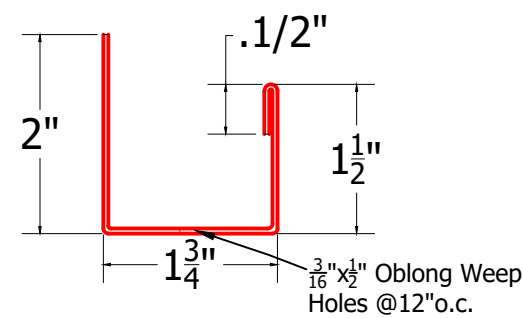
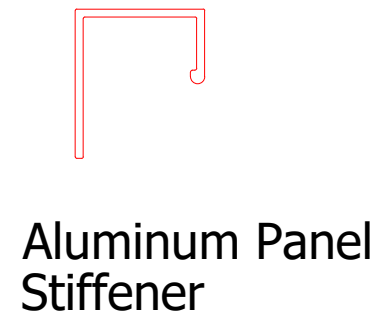


Aluminum Panel
Stiffener

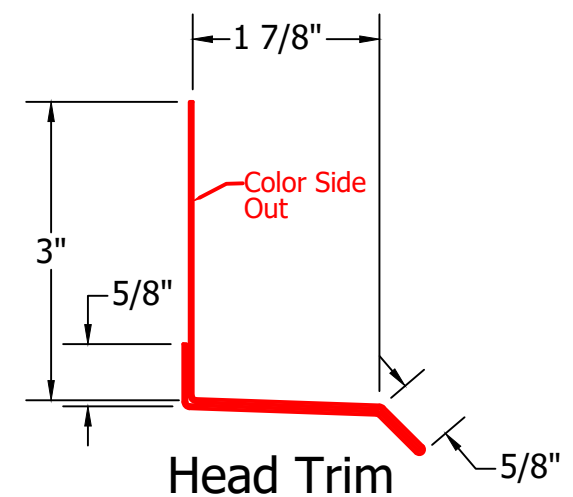
Note:
Shims Are Not Required For Metal Panel Unless
There Are Imperfections In Wall Construction.
If Imperfections, Use High Impact Plastic Shims.
(Standard Wall Construction Deviation is Less Than
1/4" In 20'-0" In All Directions).



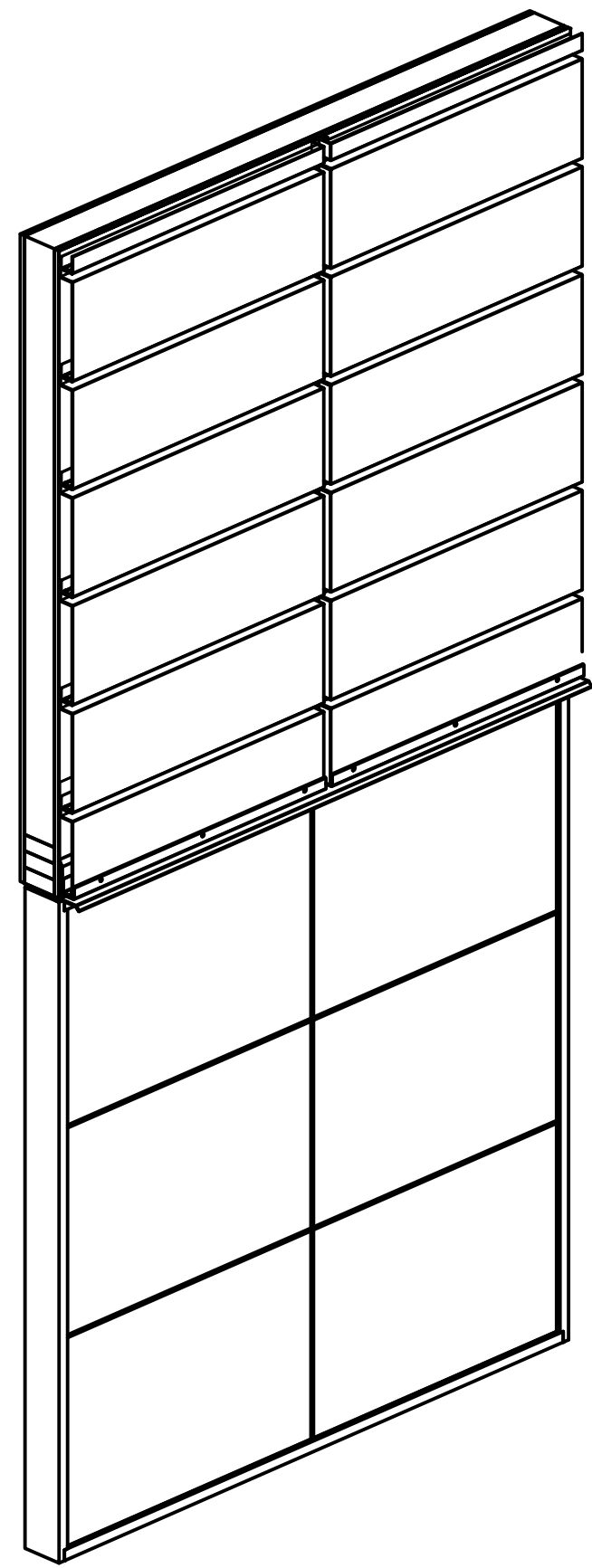
Angle Trim with Return



Panel Trim

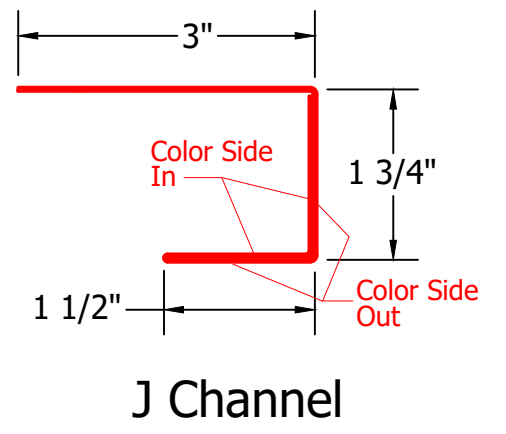
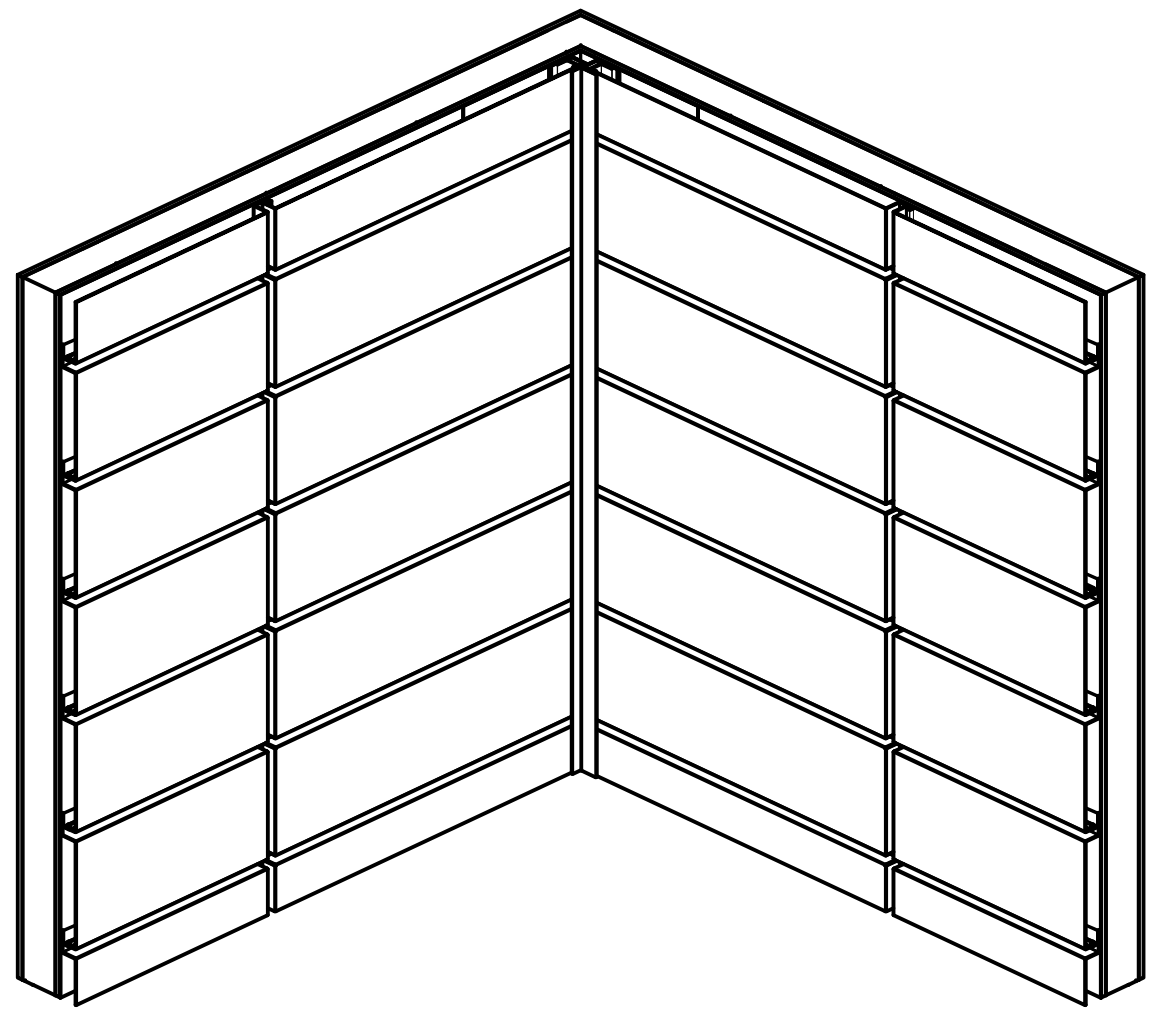
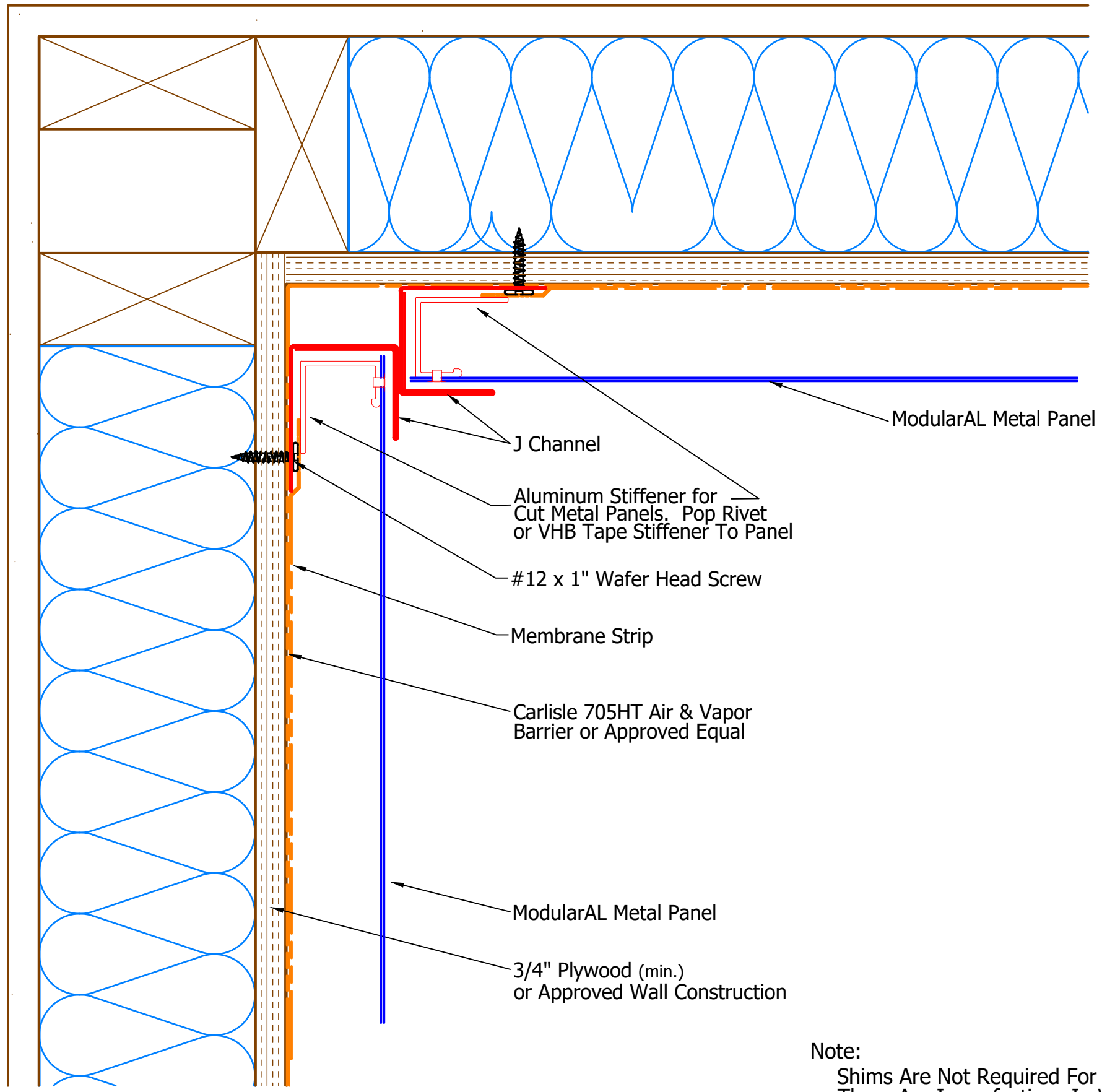


Head Trim

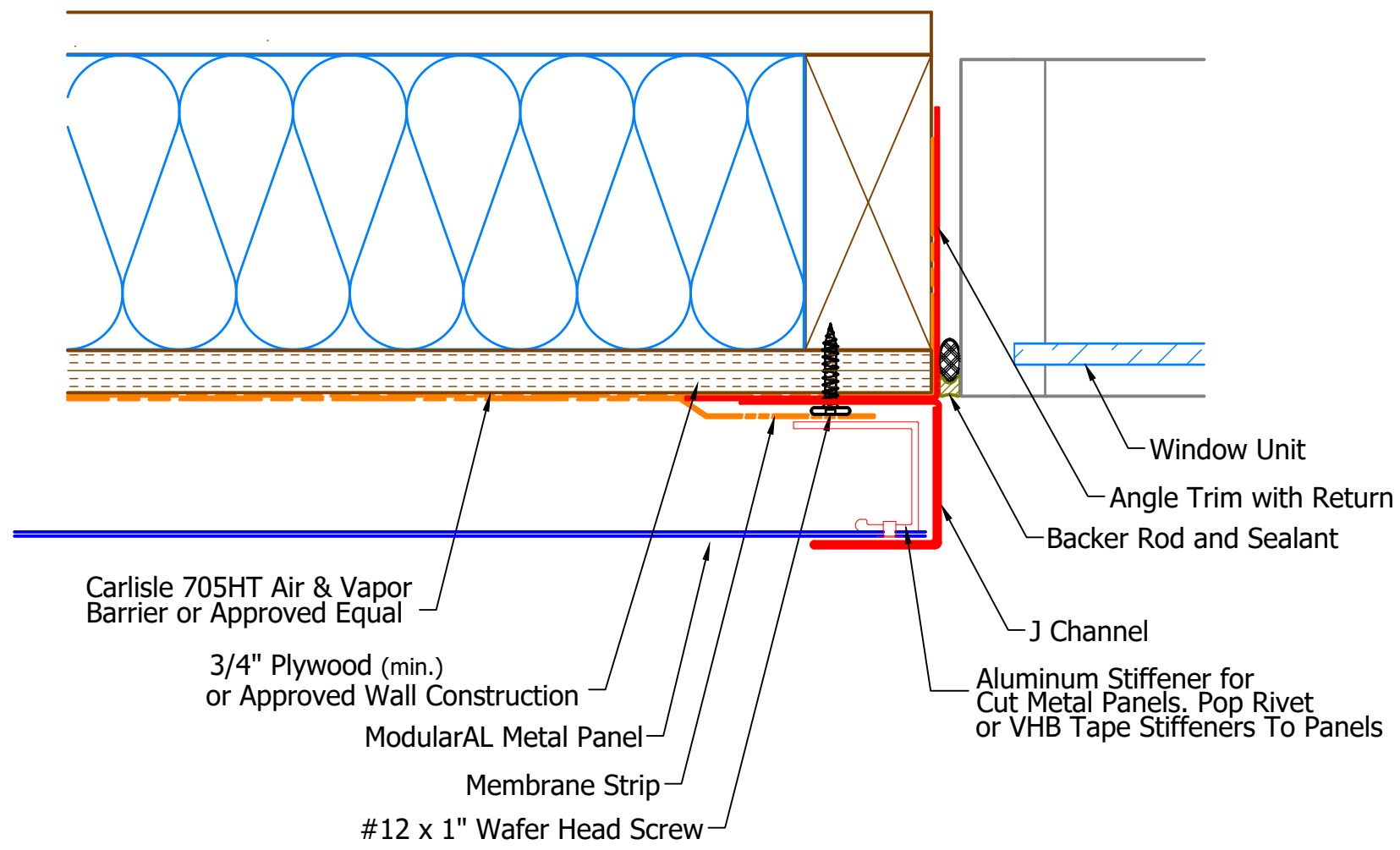


ModularAL Head Detail

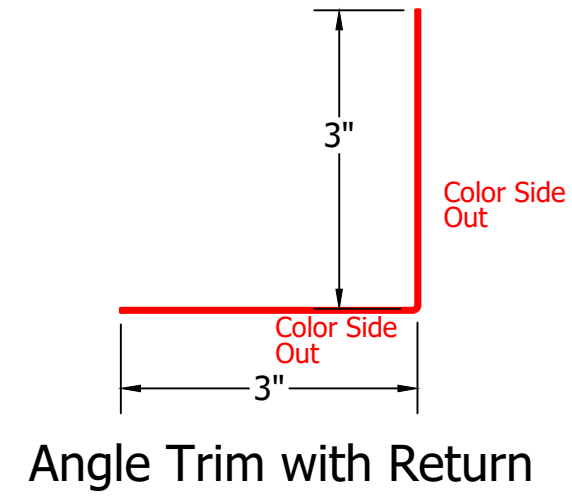
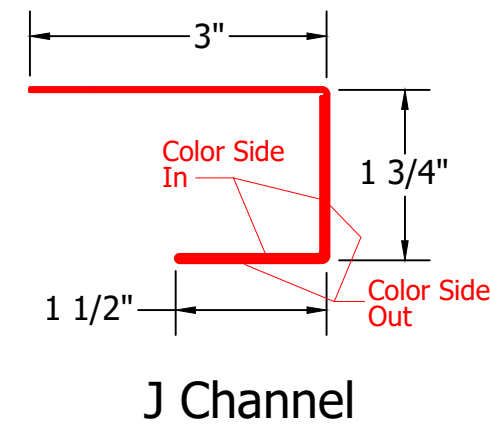
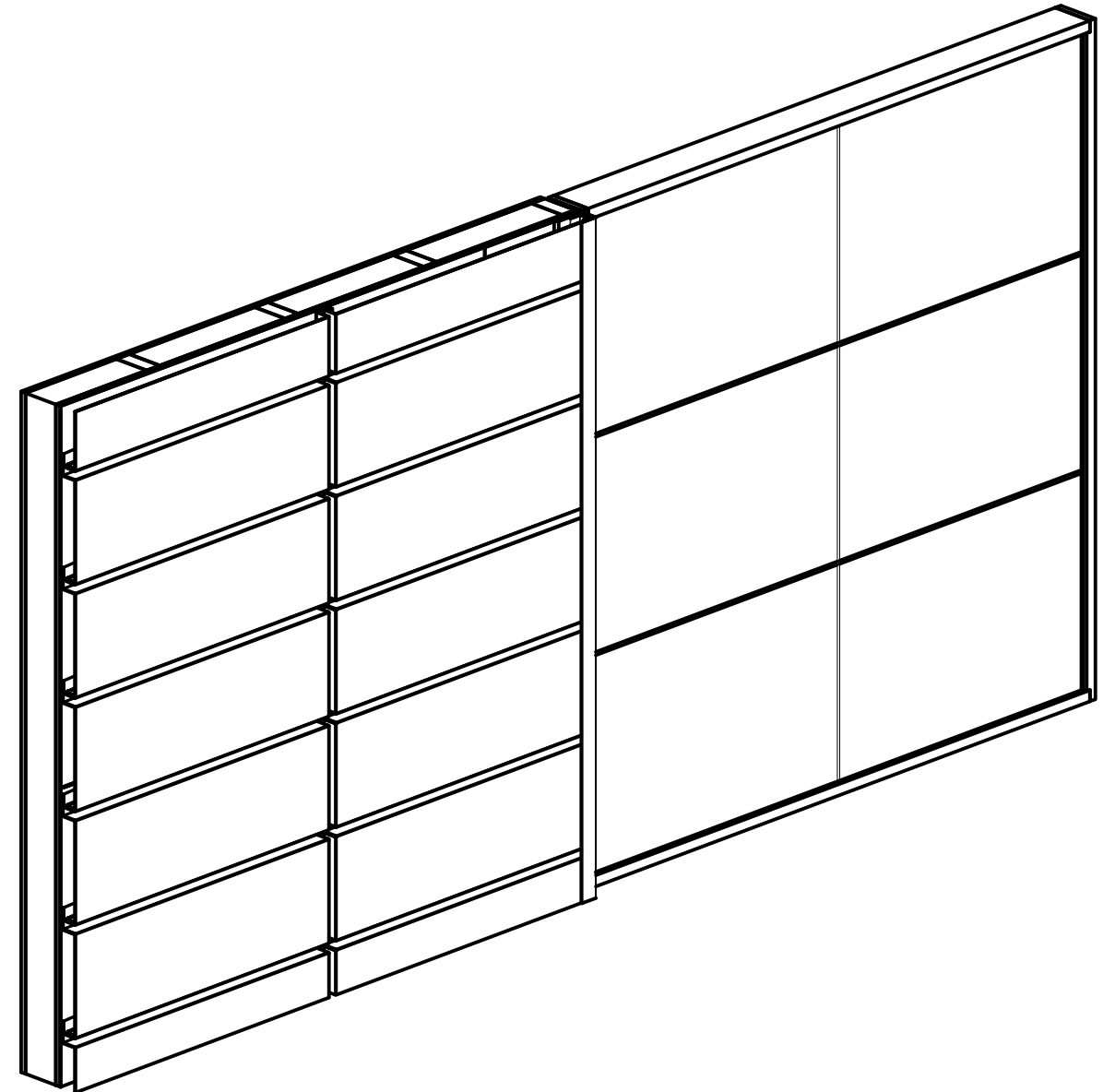
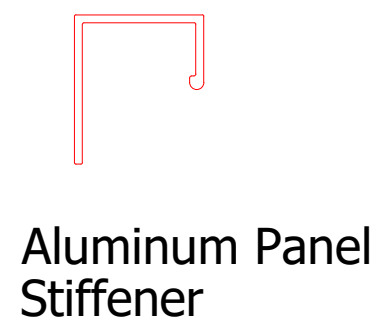
Note:
 Shims Are Not Required For Metal Panel Unless There Are Imperfections In Wall Construction. If Imperfections, Use High Impact Plastic Shims. (Standard Wall Construction Deviation is Less Than $\frac{1}{4}$ " In 20'-0" In All Directions).



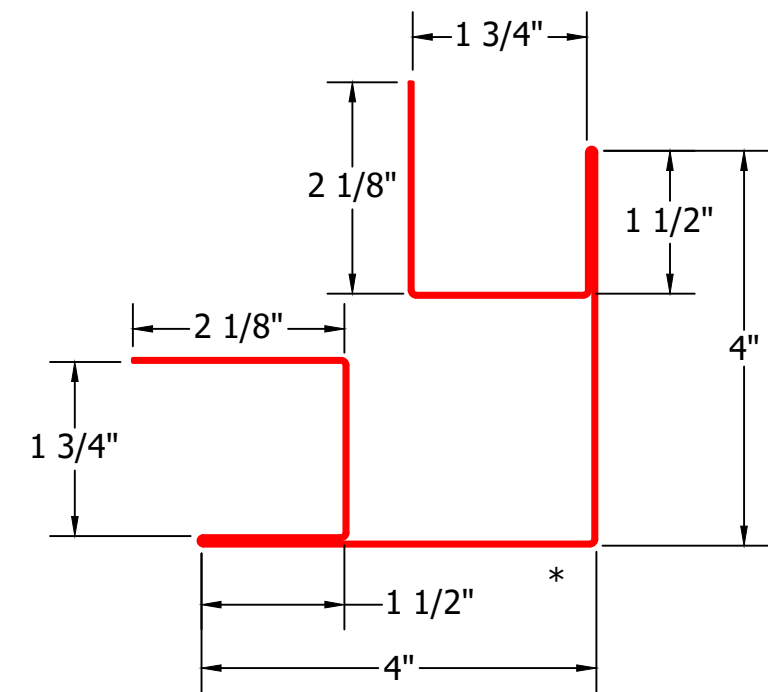
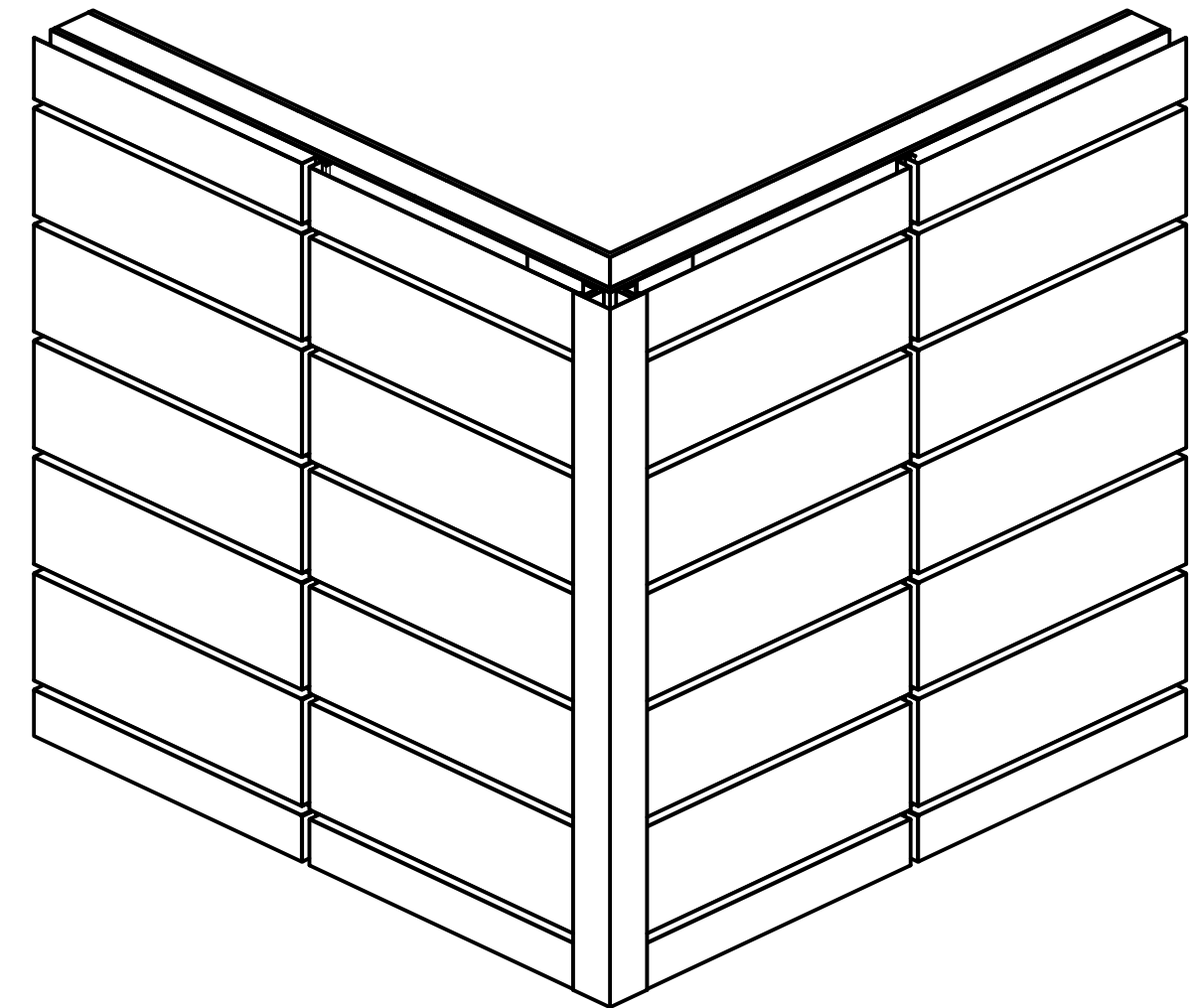
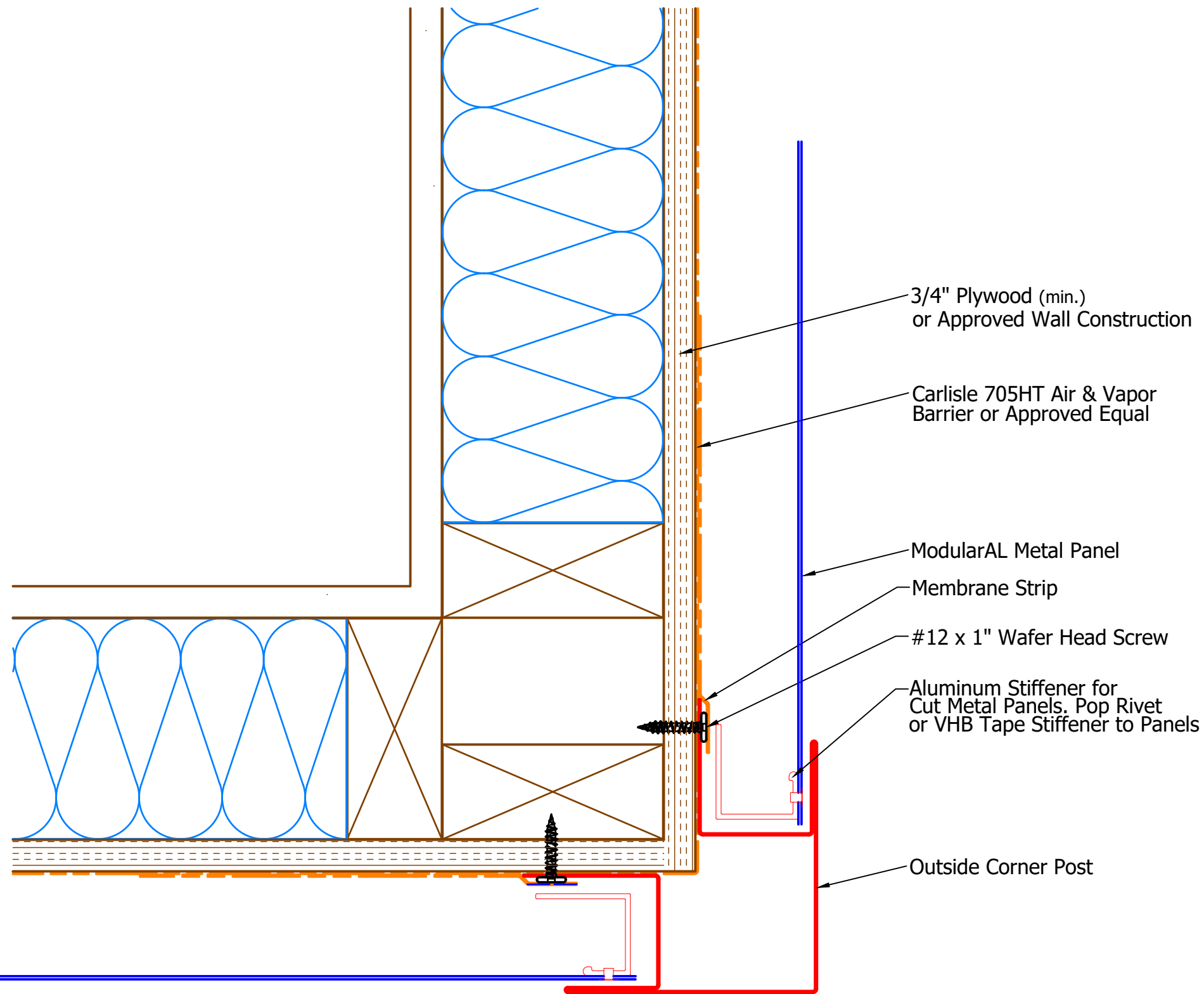
Note:
 Shims Are Not Required For Metal Panel Unless There Are Imperfections In Wall Construction. If Imperfections, Use High Impact Plastic Shims. (Standard Wall Construction Deviation is Less Than 1/4" In 20'-0" In All Directions).



Note:
 Shims Are Not Required For Metal Panel Unless There Are Imperfections In Wall Construction. If Imperfections, Use High Impact Plastic Shims. (Standard Wall Construction Deviation is Less Than 1/4" In 20'-0" In All Directions).

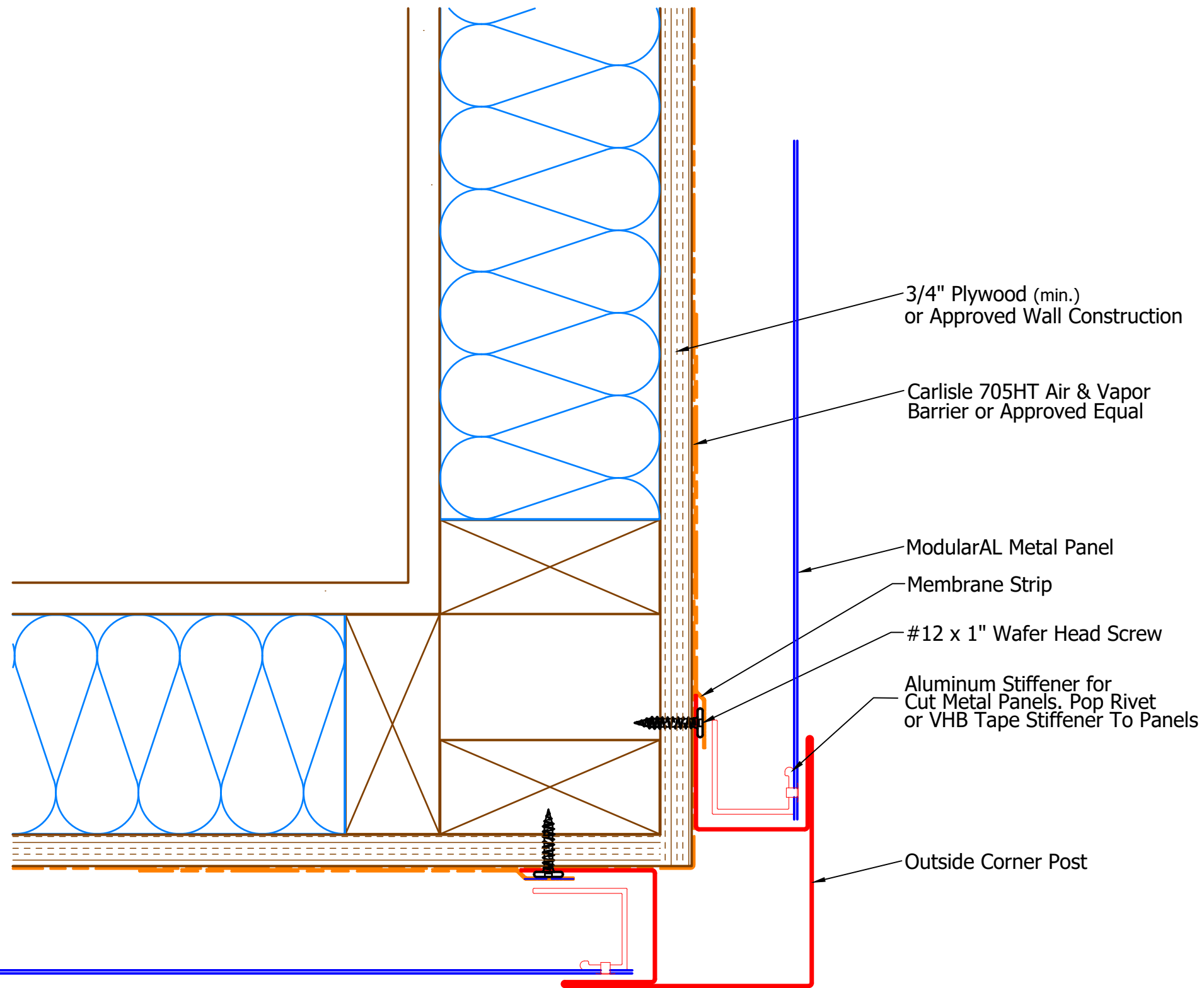


ModularAL Jamb Detail

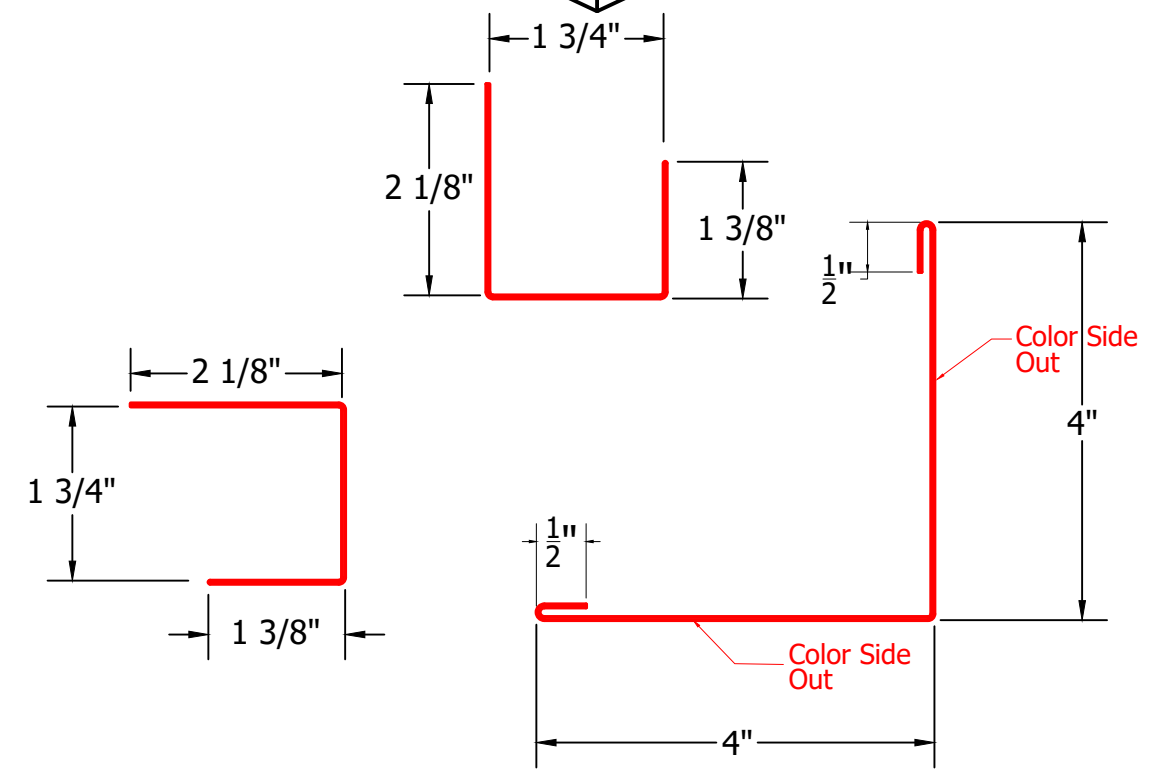
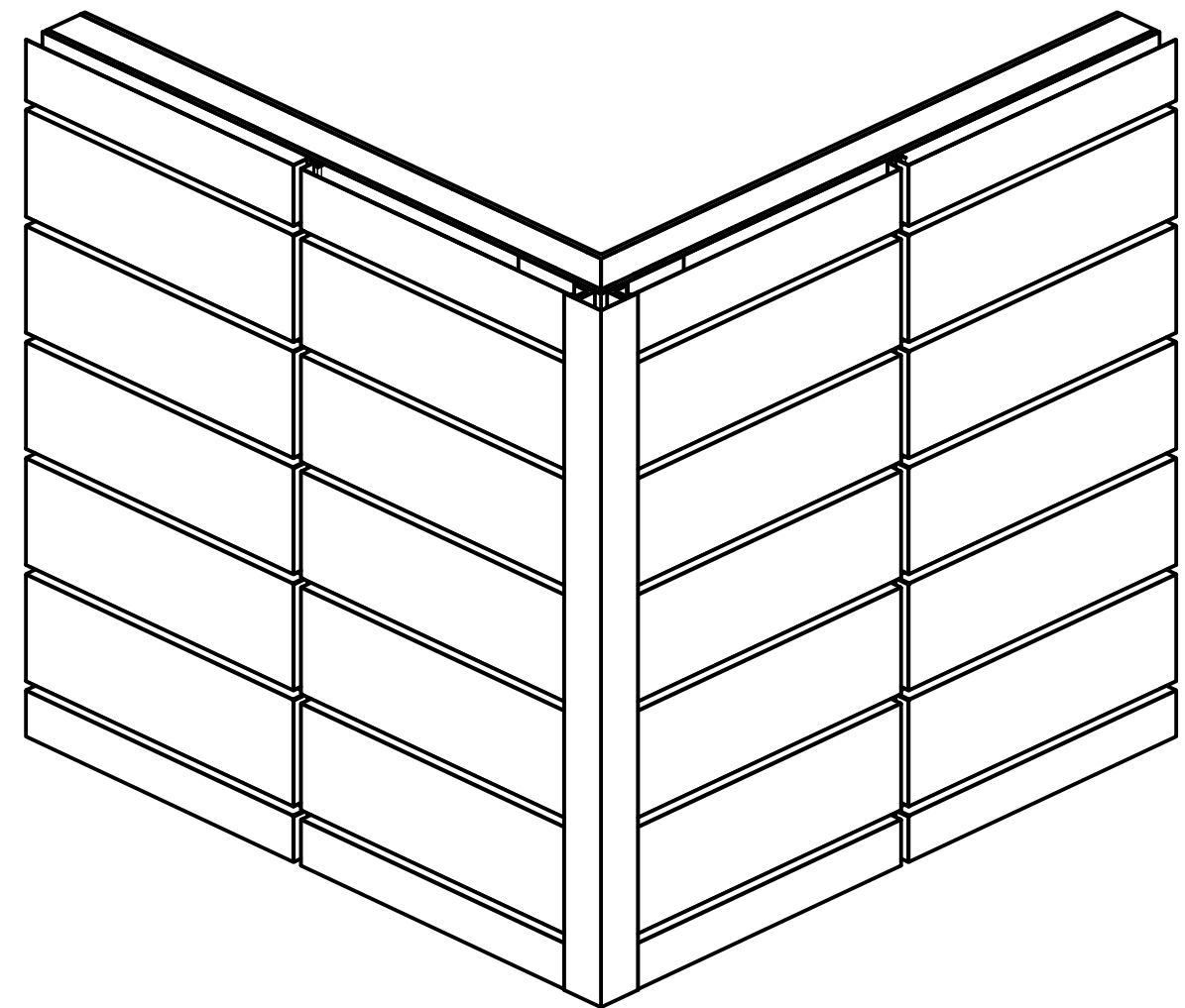


Outside Corner Post

Note:
Shims Are Not Required For Metal Panel Unless
There Are Imperfections In Wall Construction.
If Imperfections, Use High Impact Plastic Shims.
(Standard Wall Construction Deviation is Less Than
1/4" In 20'-0" In All Directions).



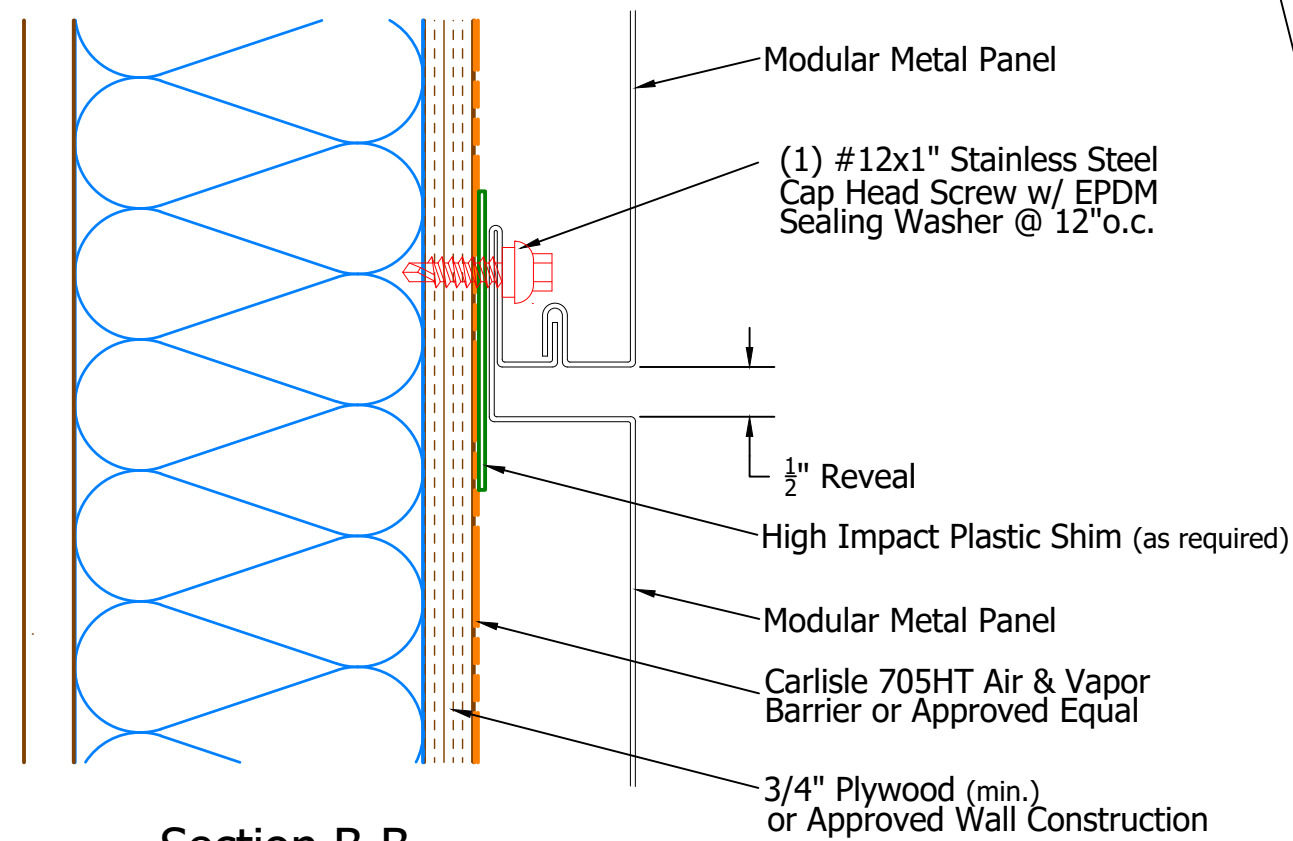
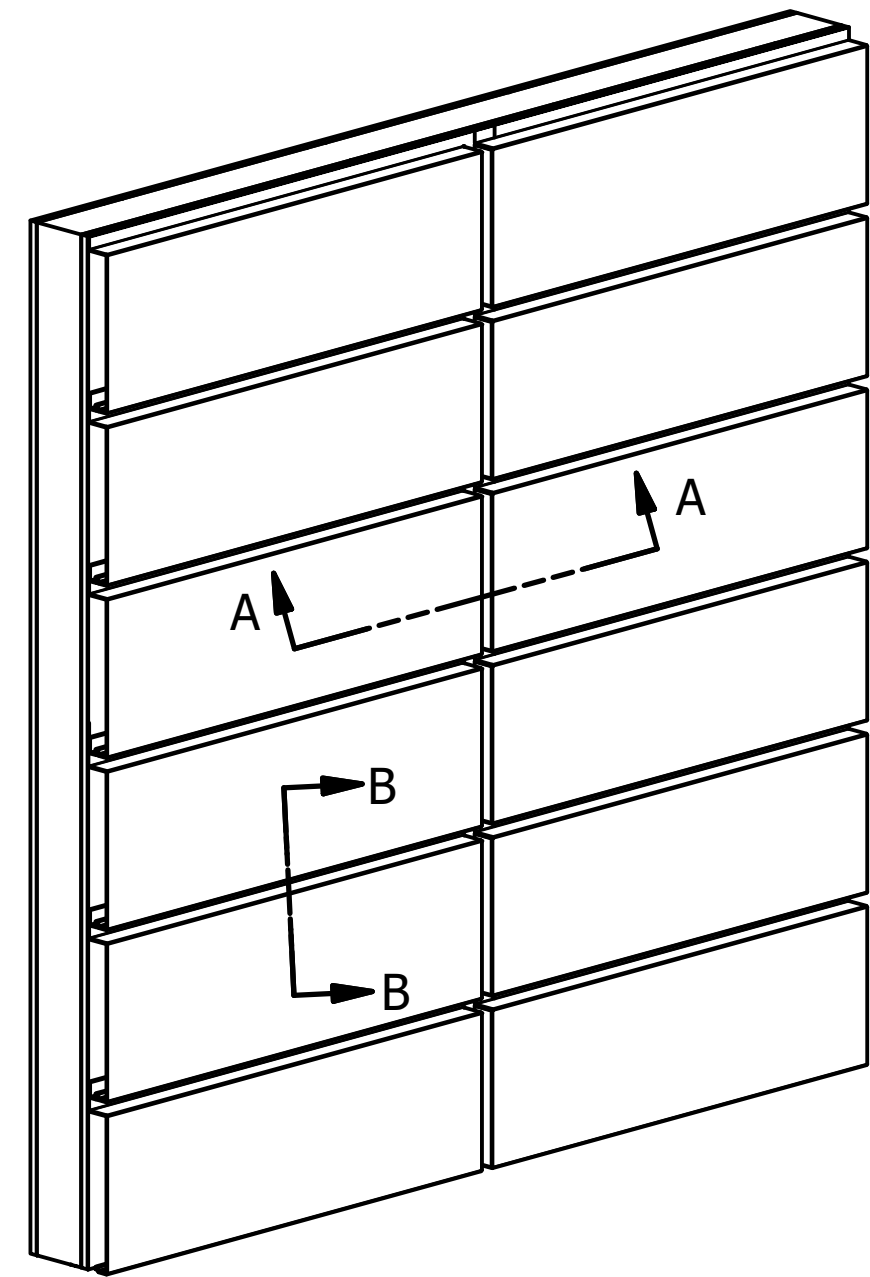
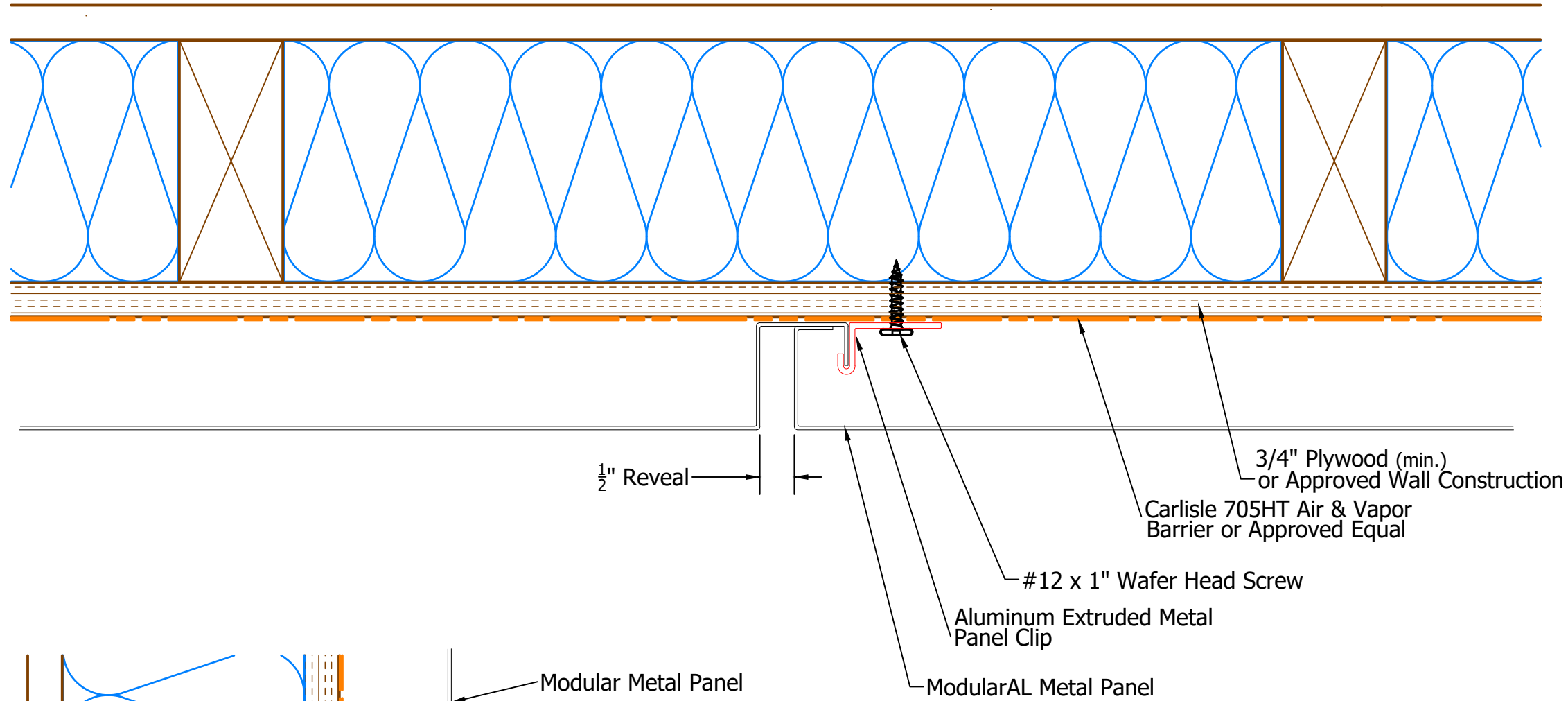
Note:
 Shims Are Not Required For Metal Panel Unless
 There Are Imperfections In Wall Construction.
 If Imperfections, Use High Impact Plastic Shims.
 (Standard Wall Construction Deviation is Less Than
 1/4" In 20'-0" In All Directions).



Outside Corner Post

ModularAL
 Outside Corner Detail
 Option #2

Section A-A

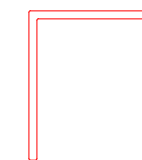
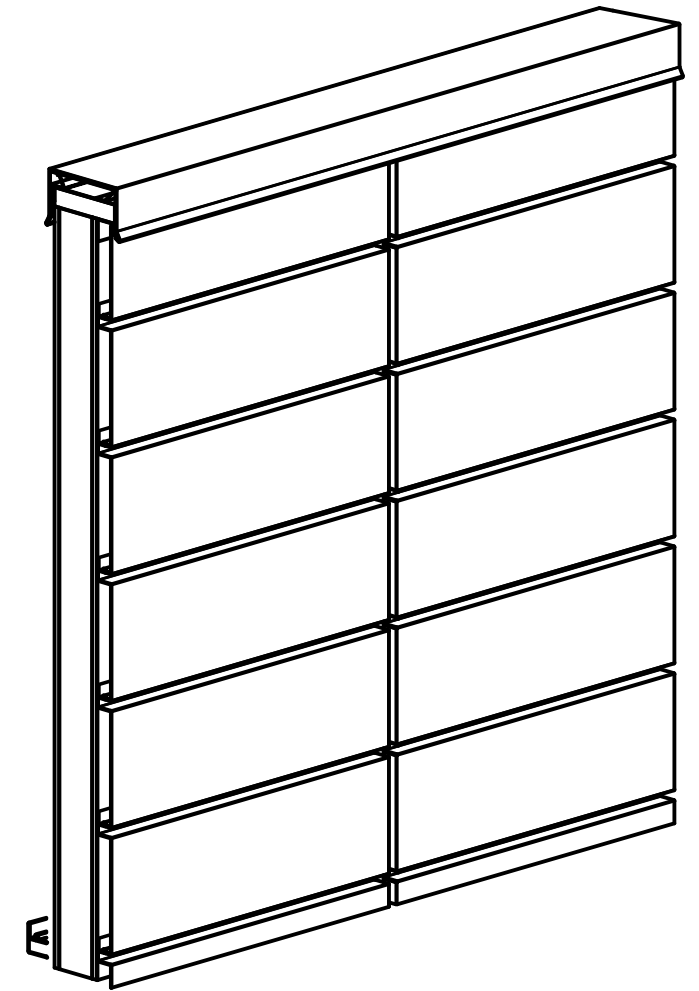
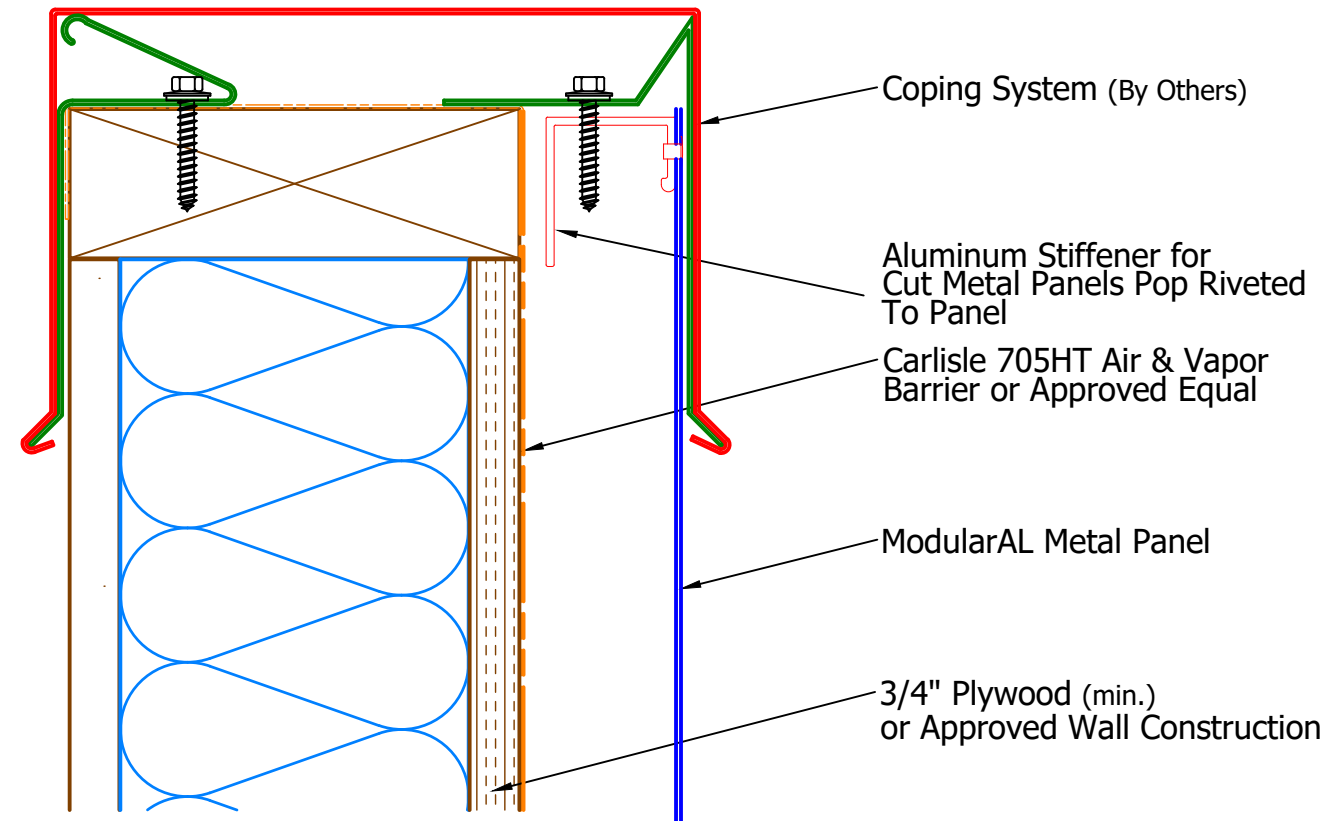


Section B-B

Note:

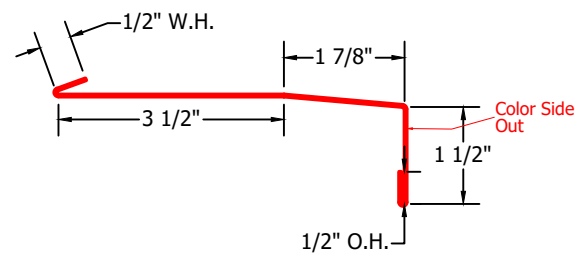
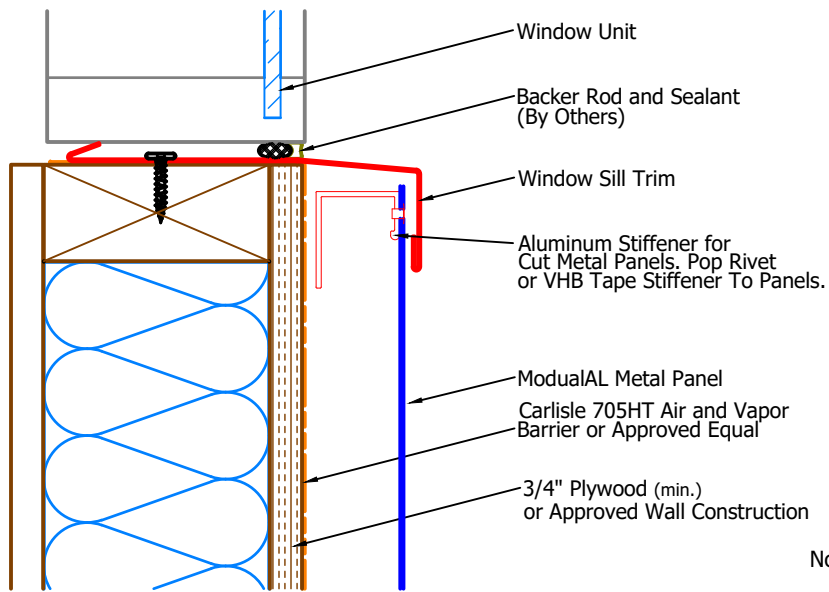
Shims Are Not Required For Metal Panel Unless There Are Imperfections In Wall Construction. If Imperfections, Use High Impact Plastic Shims. (Standard Wall Construction Deviation is Less Than 1/4" In 20'-0" In All Directions).

ModularAL Panel Detail



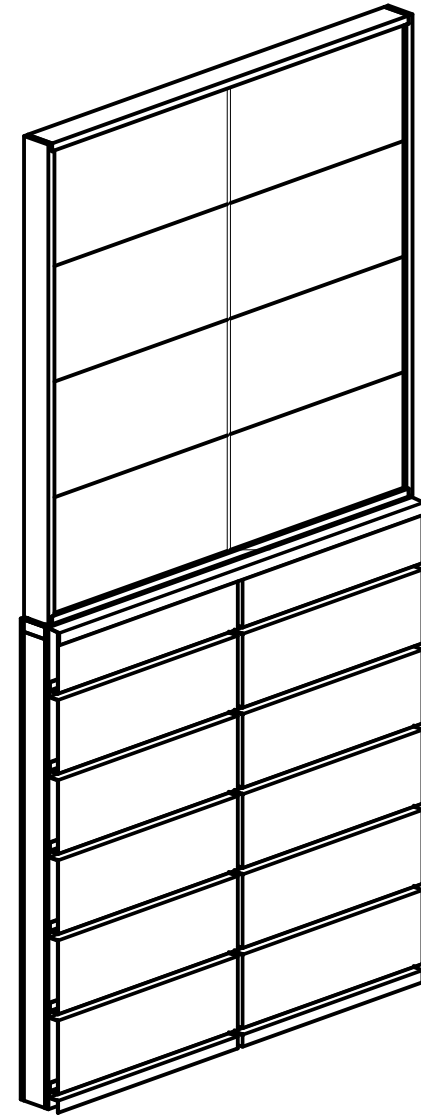
Aluminum Panel Stiffener

Note:
 Shims Are Not Required For Metal Panel Unless There Are Imperfections In Wall Construction. If Imperfections, Use High Impact Plastic Shims. (Standard Wall Construction Deviation is Less Than 1/4" In 20'-0" In All Directions).



Window Sill Trim

Note:
 Shims Are Not Required For Metal Panel Unless There Are Imperfections In Wall Construction. If Imperfections, Use High Impact Plastic Shims. (Standard Wall Construction Deviation is Less Than 1/4" In 20'-0" In All Directions).



ModularAL Window Sill Detail