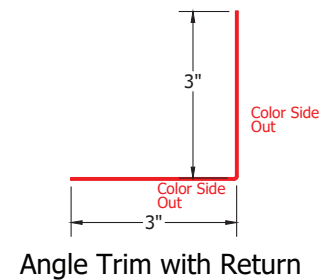
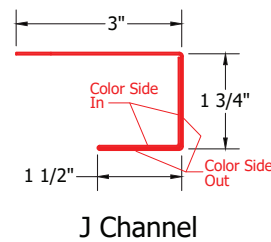
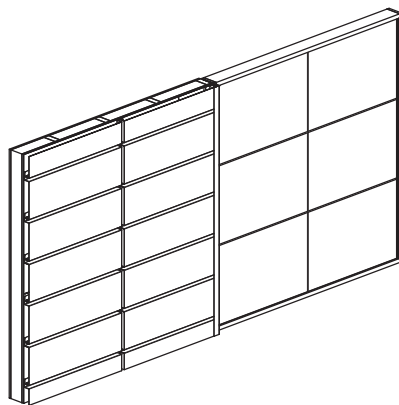
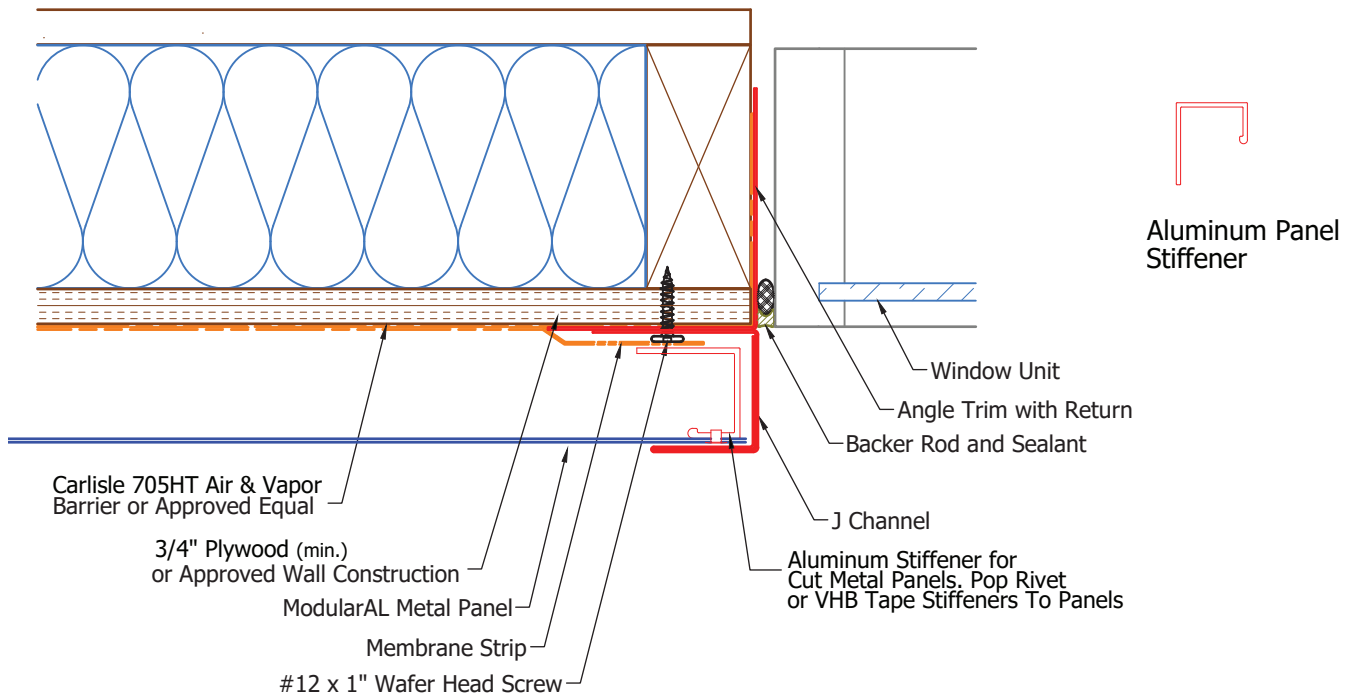


NOTES:

- Shims Are Not Required For Metal Panel Unless There Are Imperfections In Wall Construction.
- If Imperfections, Use High Impact Plastic Shims.
- (Standard Wall Construction Deviation is Less Than 1/4" In 20'-0" In All Directions).



JOB NAME	NOTES
DATE	
CONTRACTOR	