

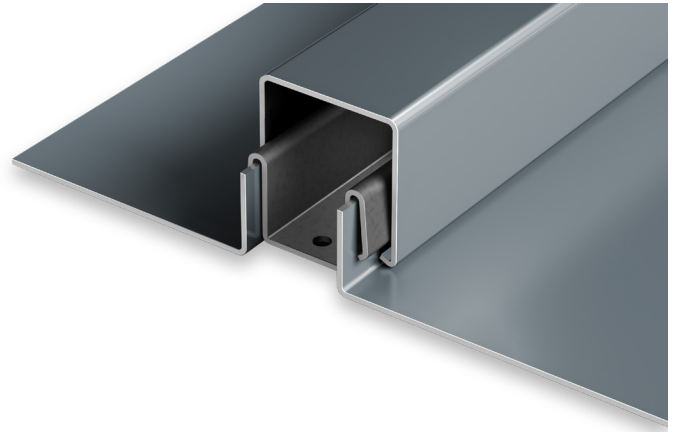
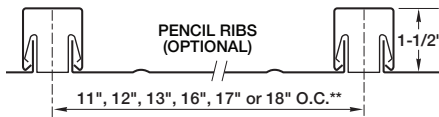
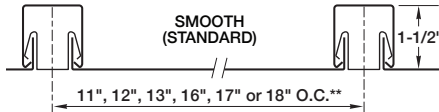
SNAP-ON BATTEN PANEL

MATERIALS

.032 aluminum 24 gauge steel

SPECS

11", 12", 13", 16", 17" 1-1/2" HIGH
OR 18" O.C.



PRODUCT FEATURES

- ▶ Ideal for transition roofs
- ▶ Pencil ribs available
- ▶ 30-year non-prorated finish warranty
- ▶ Panel lengths up to 35'

MATERIAL

- ▶ 43 stocked colors (24 gauge steel)

- ▶ 36 stocked colors (.032 aluminum)
- ▶ Galvalume Plus available

UL CLASSIFICATION

- ▶ UL-580 Class 90 rated over solid substrate (steel only - up to 18" O.C.)
- ▶ UL-1897 wind uplift
- ▶ UL-790 Class A fire rated
- ▶ UL-263 fire resistance rated

ASTM TESTS

- ▶ ASTM E283/1680 tested
- ▶ ASTM E331/1646 tested

FLORIDA BUILDING PRODUCT APPROVALS

Please refer to pac-clad.com or your local factory for specific product approval numbers for Snap-On Panels.

A complete specification is available online at pac-clad.com.