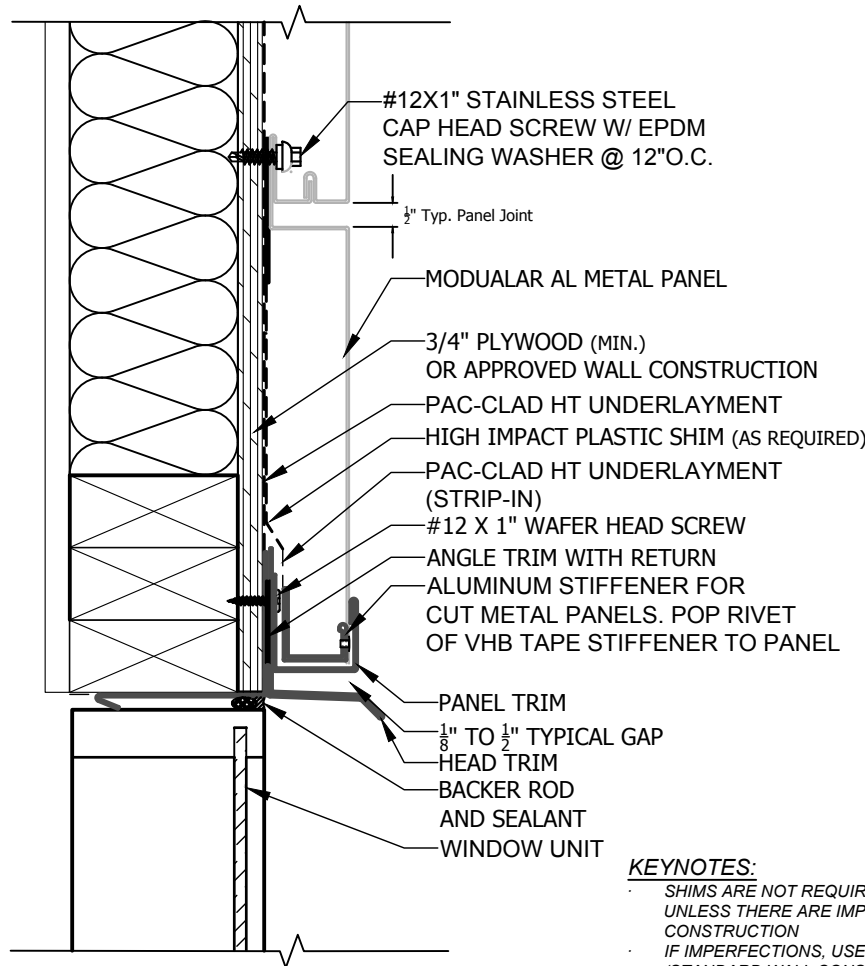
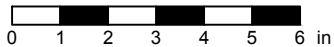


# COMPOSITE WALL - MODULAR AL - WOOD SUBSTRATE DETAILS HEAD DETAIL



SCALE: 3" = 1'-0"

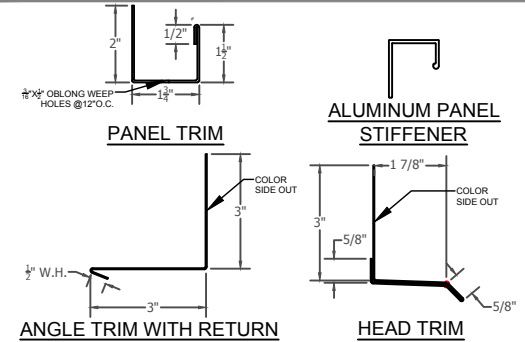


EFFECTIVE DATE: 01-03-2023  
SUBJECT TO CHANGE WITHOUT NOTICE

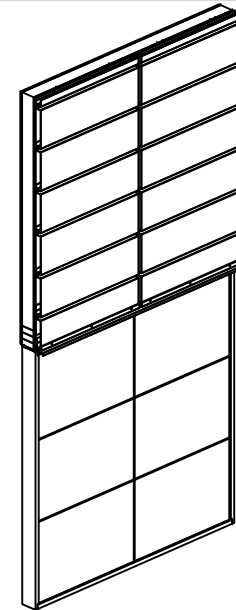
**KEYNOTES:**

- SHIMS ARE NOT REQUIRED FOR METAL PANELS UNLESS THERE ARE IMPERFECTIONS IN WALL CONSTRUCTION
- IF IMPERFECTIONS, USE HIGH IMPACT PLASTIC SHIMS. (STANDARD WALL CONSTRUCTION DEVIATION IS LESS THAN 1/4" IN 20'-0" IN ALL DIRECTIONS).

## ACCESSORIES



## ISOMETRIC



DISCLAIMER: DETAIL SHOWN FOR ILLUSTRATION PURPOSES ONLY. ACTUAL PROJECT DETAIL MAY VARY