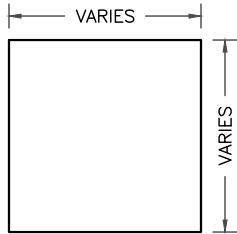


# COMPOSITE WALL - PAC-3000 RS - WOOD SUBSTRATE DETAILS

## PANEL INFORMATION



MAX PANEL WIDTH: 60"  
MIN. PANEL WIDTH: 4"  
MAX PANEL LENGTH: 194"  
MIN. PANEL LENGTH: 4"

### ACCESSORIES

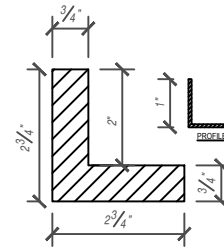
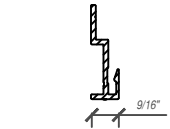
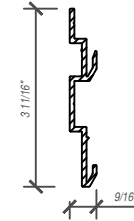


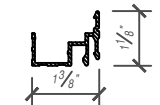
PLATE PANEL RETURN  
REINFORCEMENT



"J" CLIP EXTRUSION  
(STARTER STRIP)



TRACK CLIP  
EXTRUSION



FACTORY APPLIED  
CONT. ALUM. EXTRUSION

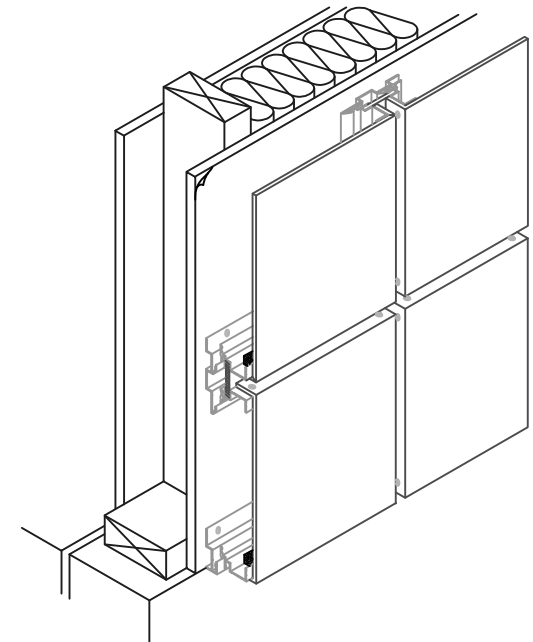
### EXTERNAL MATERIAL OPTIONS

STAINLESS STEEL  
ZINC  
COMPOSITE  
ANODIZED ALUMINUM  
MILL FINISH ALUMINUM

### INTERNAL MATERIAL OPTIONS

POLYETHYLENE-PE  
POLYETHYLENE-FR  
PHENOLIC-FR

### SYSTEM ISOMETRIC



### FINISH OPTIONS

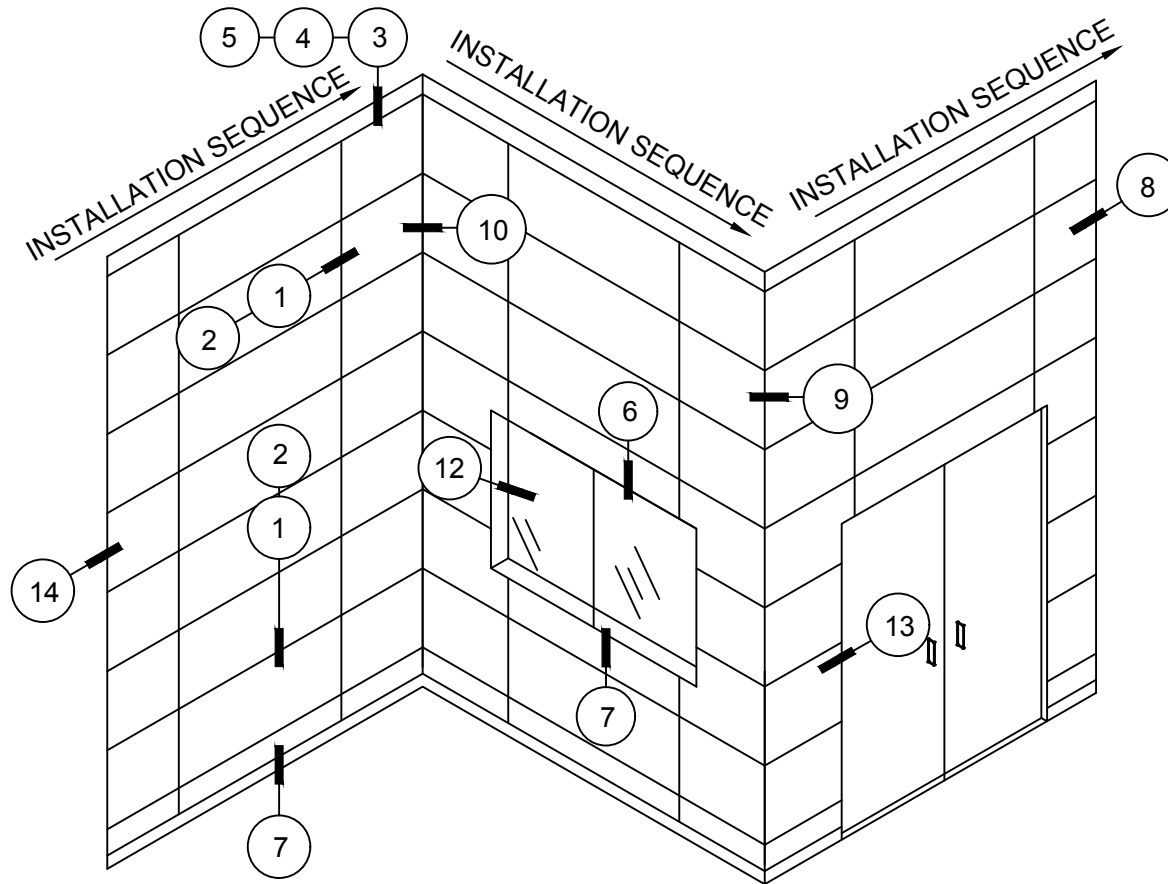
**PAINTING**  
HYLAR 5000 / KYNAR 500.

**ANODIZING**  
COIL ANODIZING IS AVAILABLE FOR CLEARS,  
BRONZES, AND VARIOUS OTHER COLORS FOR  
COLOR CONSISTENCY.

**CUSTOM COLORS**  
CUSTOM COLOR SERVICES CAN BE PROVIDED FOR  
MATERIAL, SHADE, OR TINT MATCHING.

### NOTES:

- HEAVIER GAUGES, NARROWER WIDTHS, AND EMBOSSING MINIMIZE "OIL CANNING."
- OIL CANNING IS NOT A CAUSE FOR REJECTION.
- AN EXTENSIVE SELECTION OF ASSOCIATED PANEL FLASHINGS AND TRIMS ARE AVAILABLE.
- CONTACT PETERSEN ALUMINUM CORP. FOR UP-TO-DATE TECHNICAL INFORMATION AND MATERIAL LIMITATIONS.
- ALL SYSTEMS WITH TESTING MUST BE INSTALLED IN ACCORDANCE WITH THE ASSEMBLY AS TESTED.



**ABBREVIATIONS:**  
 ACM = ALUM. COMPOSITE MATERIAL  
 B.O. = BY OTHERS  
 O.A. = OVERALL SYSTEM PANEL DIMENSION  
 P.D. = PANEL DIMENSION  
 P.H. = PANEL HEIGHT  
 P.W. = PANEL WIDTH

- KEY:**
1. HORIZONTAL/VERTICAL JOINT - TYPICAL
  2. HORIZONTAL/VERTICAL JOINT - WIDE
  3. COPING CONDITION
  4. PARAPET
  5. SOFFIT CONDITION
  6. WINDOW HEAD
  7. WINDOW SILL
  8. TERMINATION CONDITION
  9. OUTSIDE CORNER
  10. INSIDE CORNER
  11. SILL CONDITION
  12. WINDOW CONDITION
  13. START CONDITION
  14. EXPANSION JOINT
  15. COLUMN CONDITION