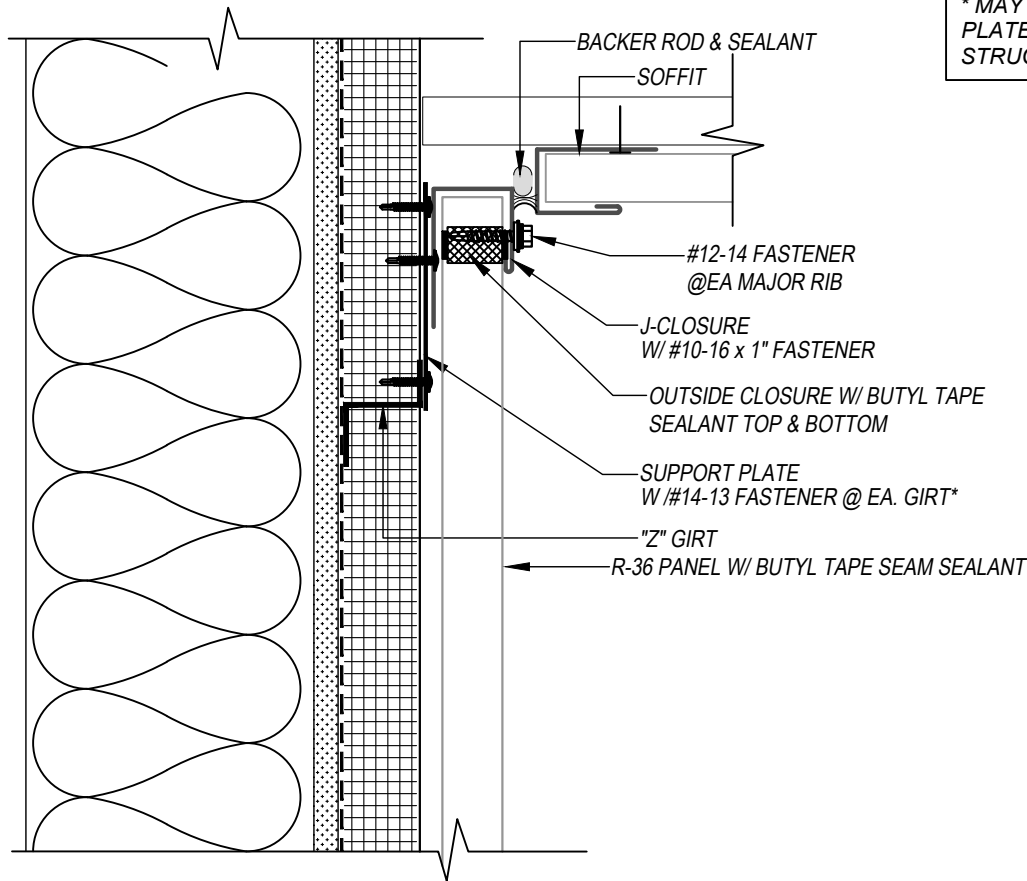


R-36 PANEL - Z-GIRT  
**WALL-TO-SOFFIT DETAIL**  
VERTICAL APPLICATION

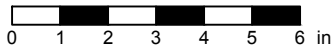


**\* MAY OMIT SUPPORT  
PLATE IF ATTACHING TO  
STRUCTURAL MEMBER**

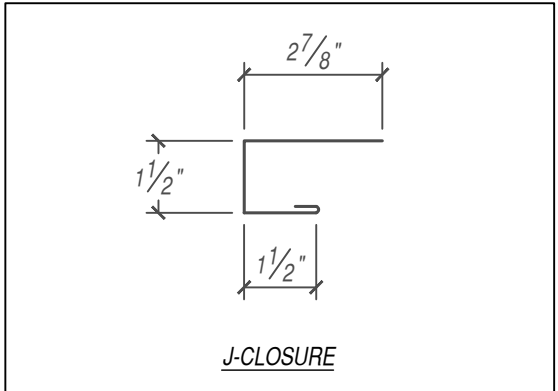
**KEYNOTES:**

- FASTENERS MUST PENETRATE TOP FLANGE OF "Z" GIRT SUBSTRATE BY 5/8" MINIMUM THREAD LENGTH
- CLIP SPACING VARIES BASED ON PROJECT SPECIFIC LOADS AND/OR LOCAL BUILDING CODES

SCALE: 3" = 1'-0"



EFFECTIVE DATE: 01-03-2023  
SUBJECT TO CHANGE WITHOUT NOTICE



FLASHINGS

DISCLAIMER: DETAIL SHOWN FOR ILLUSTRATION PURPOSES ONLY. ACTUAL PROJECT DETAIL MAY VARY