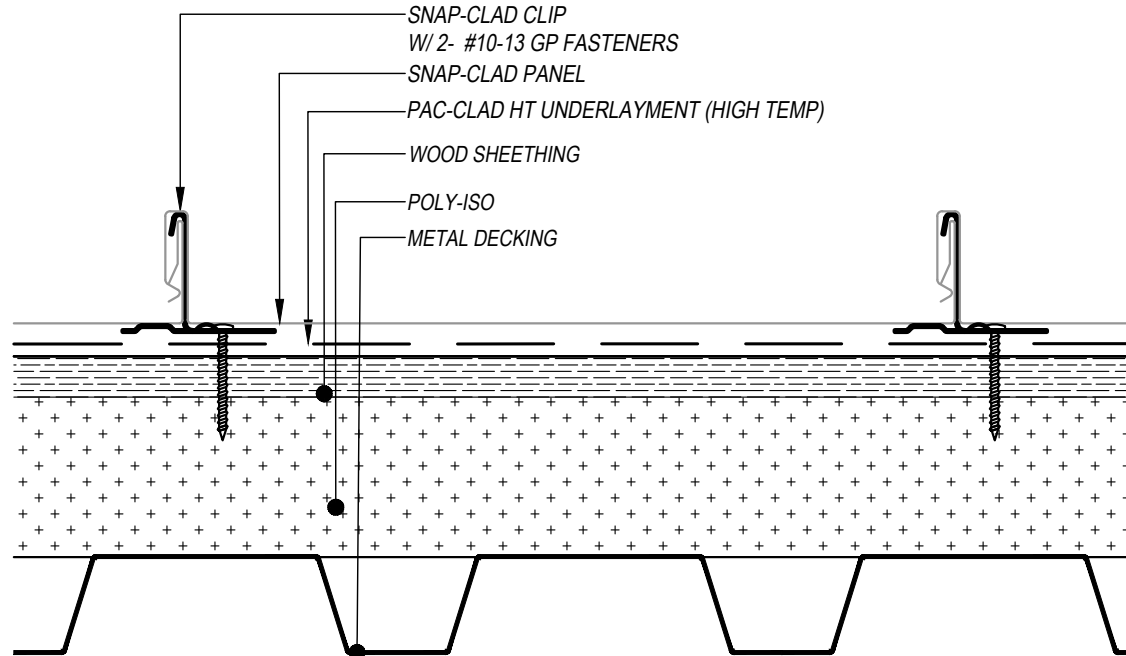
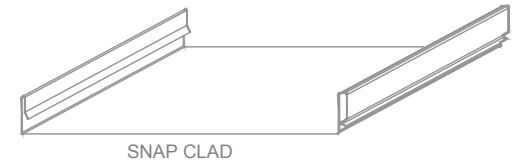
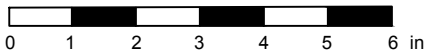


SNAP CLAD - METAL DECK / ISO SUBSTRATE DETAILS
INSTALLATION - NAILBASE / ISO



SCALE: 4" = 1'-0"



EFFECTIVE DATE: 01-03-2023
 SUBJECT TO CHANGE WITHOUT NOTICE

KEYNOTES:

- CLIP FASTENERS MUST PENETRATE WOOD SHEETHING SUBSTRATE BY 5/8" MINIMUM THREAD LENGTH
- FASTENER SPACING VARIES BASED ON PROJECT SPECIFIC LOADS AND/OR LOCAL BUILDING CODES

DISCLAIMER: DETAIL SHOWN FOR ILLUSTRATION PURPOSES ONLY. ACTUAL PROJECT DETAIL MAY VARY