











































































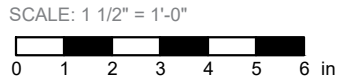
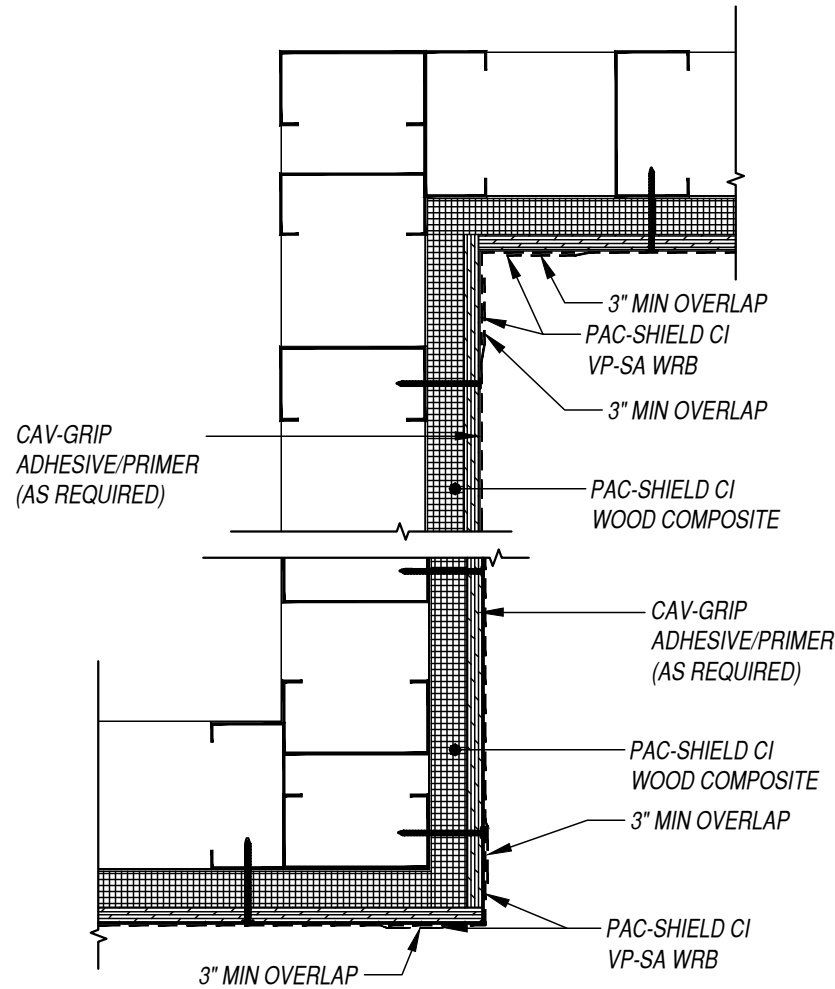








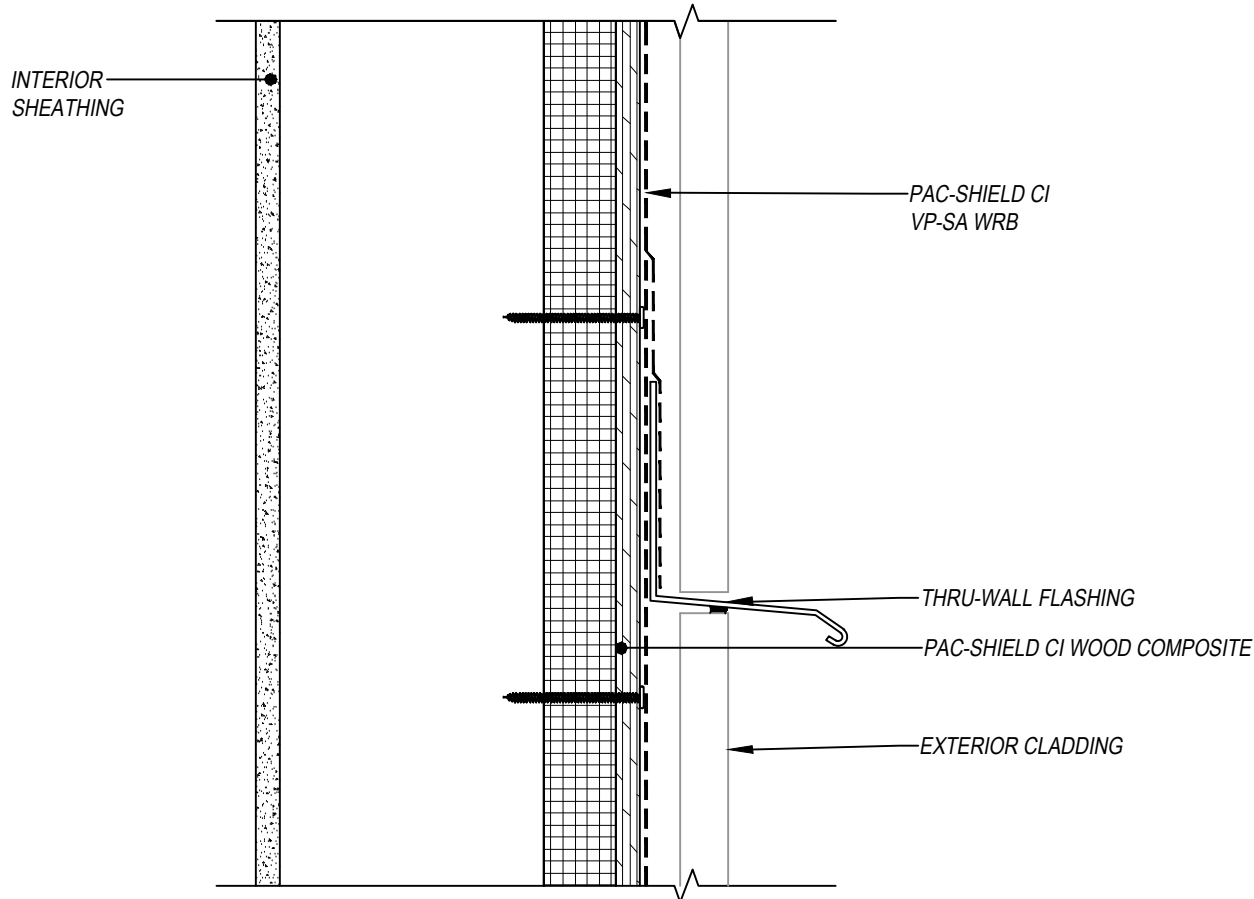
PAC-Shield CI VP-SA WRB  
**OUTSIDE AND INSIDE CORNER - METHOD B**  
 PAC-Shield CI WOOD COMPOSITE  
 CONTINUOUS POLYISO INSULATION  
 PAC-Shield CI VP-SA WRB  
 VAPOR PERMEABLE, SELF ADHERING AND WATER RESISTIVE BARRIER



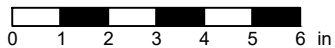
SUBJECT TO CHANGE WITHOUT NOTICE

DISCLAIMER: DETAIL SHOWN FOR ILLUSTRATION PURPOSES ONLY. ACTUAL PROJECT DETAIL MAY VARY

# THRU-WALL FLASHING DETAIL



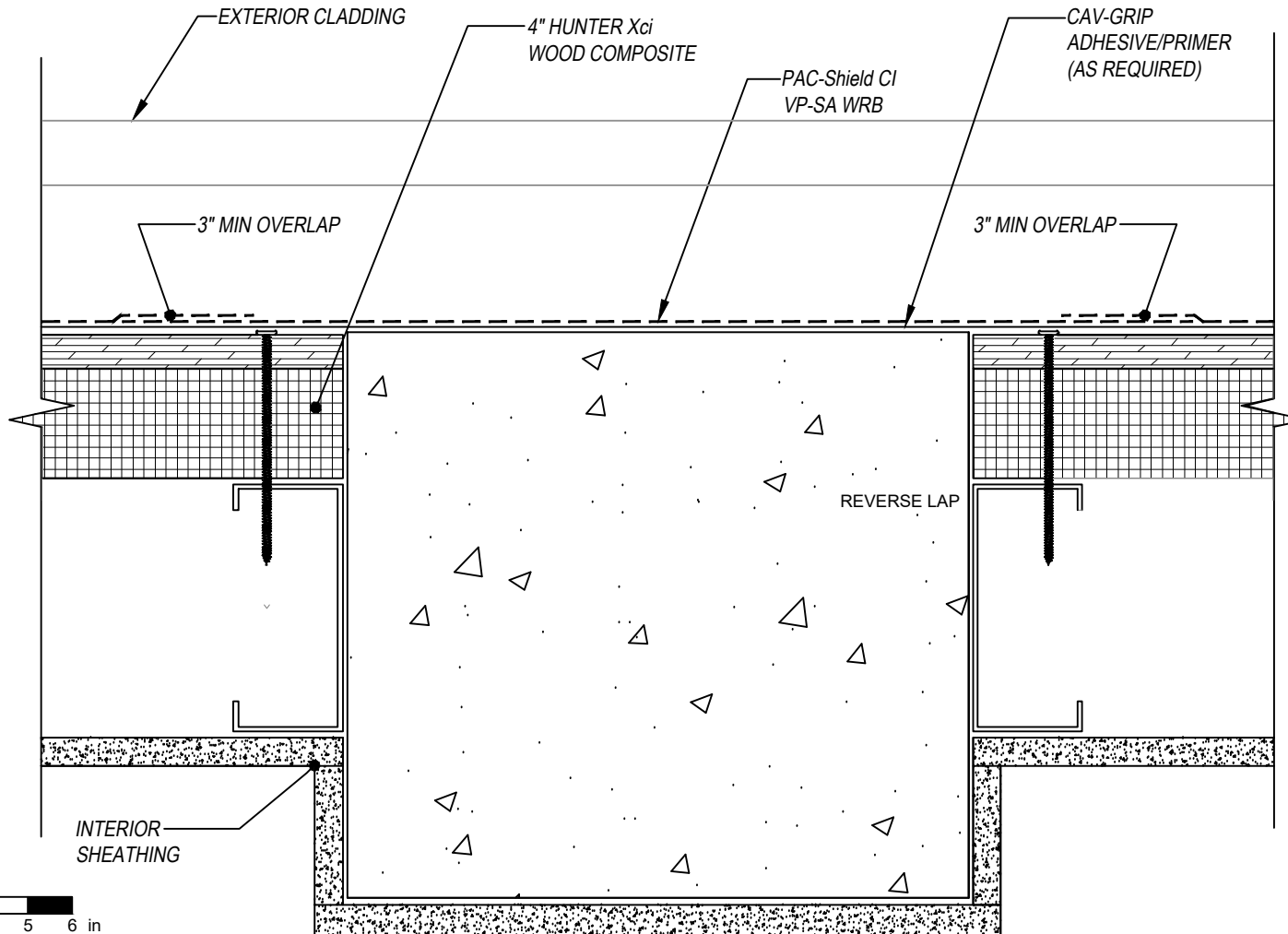
SCALE: 3" = 1'-0"



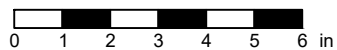
SUBJECT TO CHANGE WITHOUT NOTICE

DISCLAIMER: DETAIL SHOWN FOR ILLUSTRATION PURPOSES ONLY. ACTUAL PROJECT DETAIL MAY VARY

# COLUMN TRANSITION DETAIL



SCALE: N.T.S.

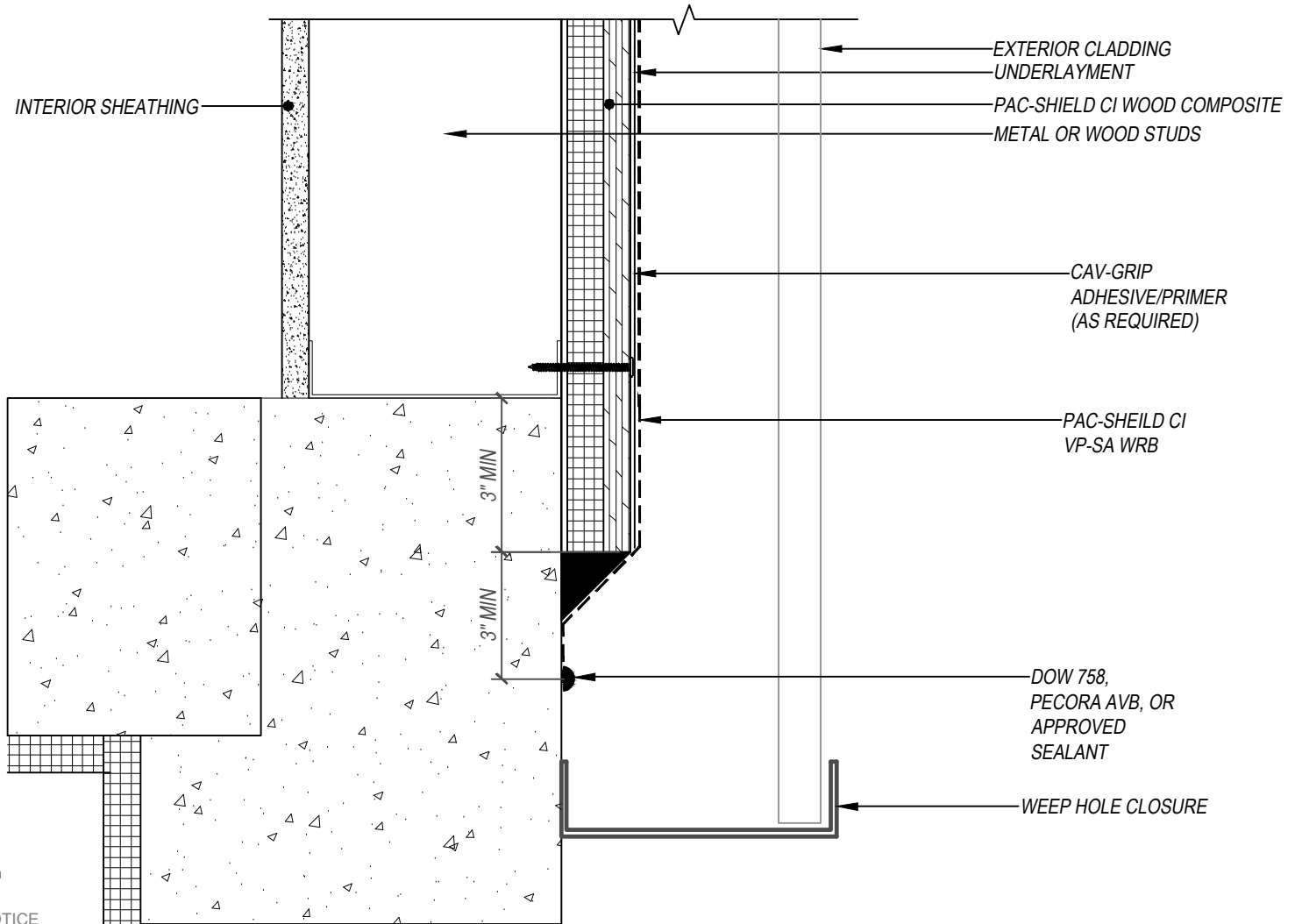


SUBJECT TO CHANGE WITHOUT NOTICE

DISCLAIMER: DETAIL SHOWN FOR ILLUSTRATION PURPOSES ONLY. ACTUAL PROJECT DETAIL MAY VARY

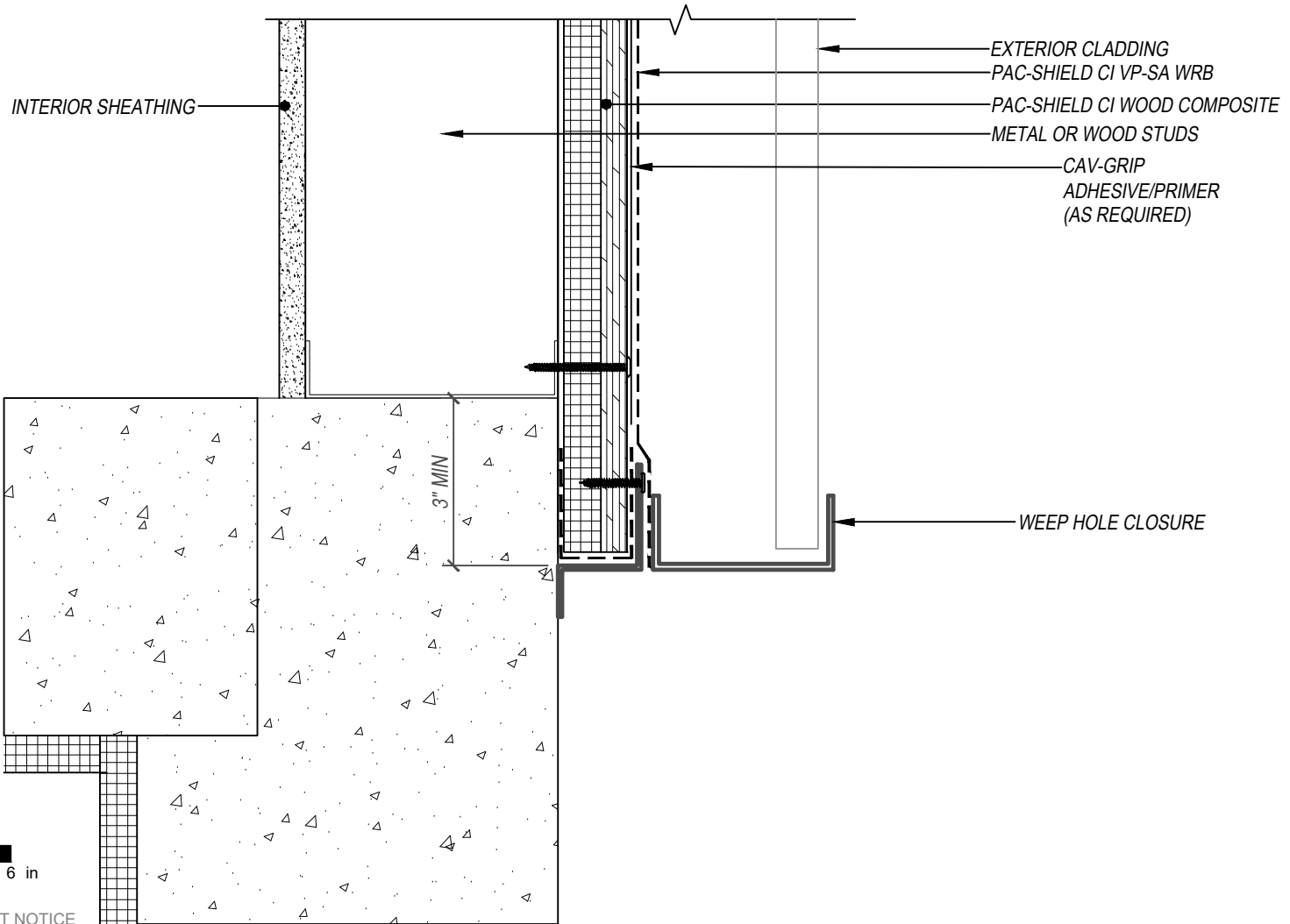


## TIE-IN AT FOUNDATION - OPTION 2

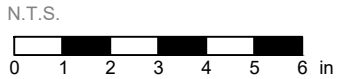
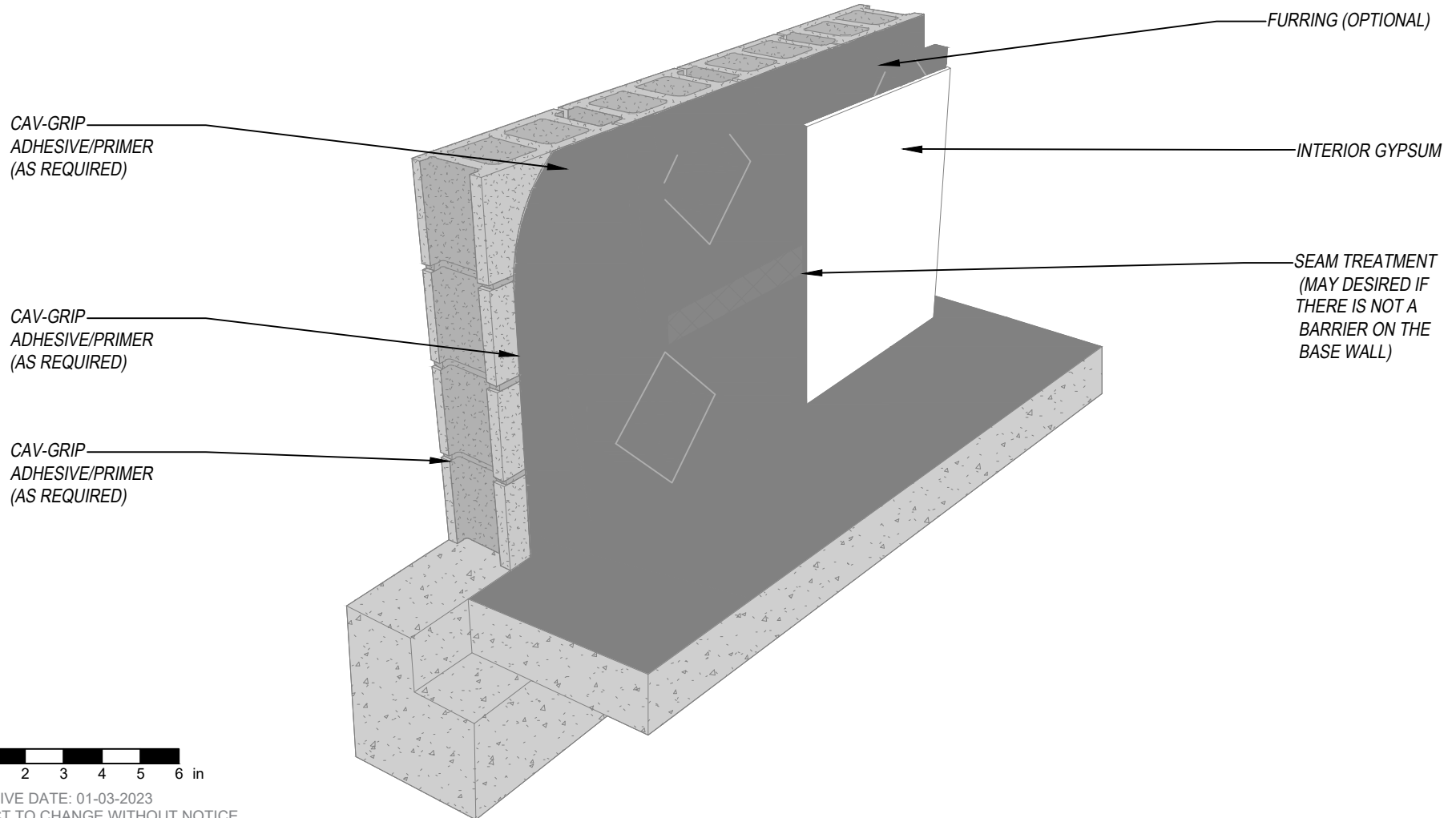


DISCLAIMER: DETAIL SHOWN FOR ILLUSTRATION PURPOSES ONLY. ACTUAL PROJECT DETAIL MAY VARY

PAC-Shield CI POLYISO  
**TIE-IN AT FOUNDATION - OPTION 3**  
 PAC-Shield CI WOOD COMPOSITE  
 CONTINUOUS INSULATION UNDER WRB NO SHEATHING  
 EXTERIOR CLADDING NON-MASONRY



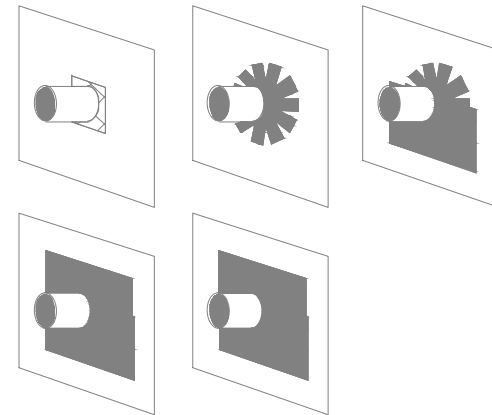
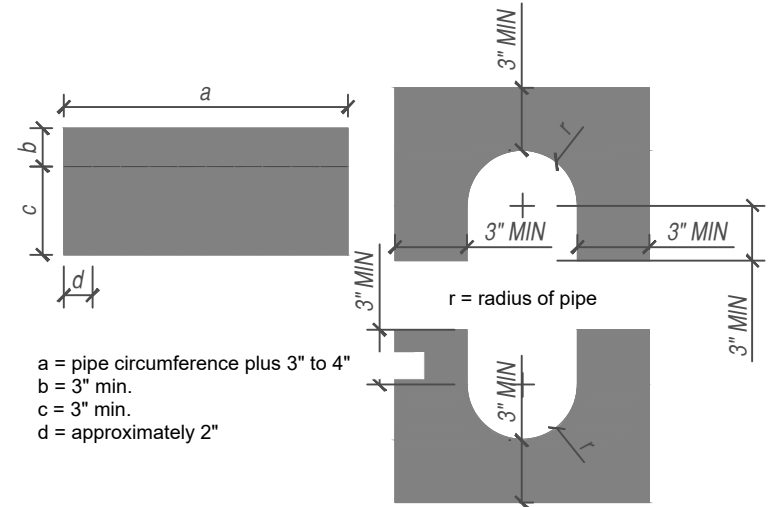
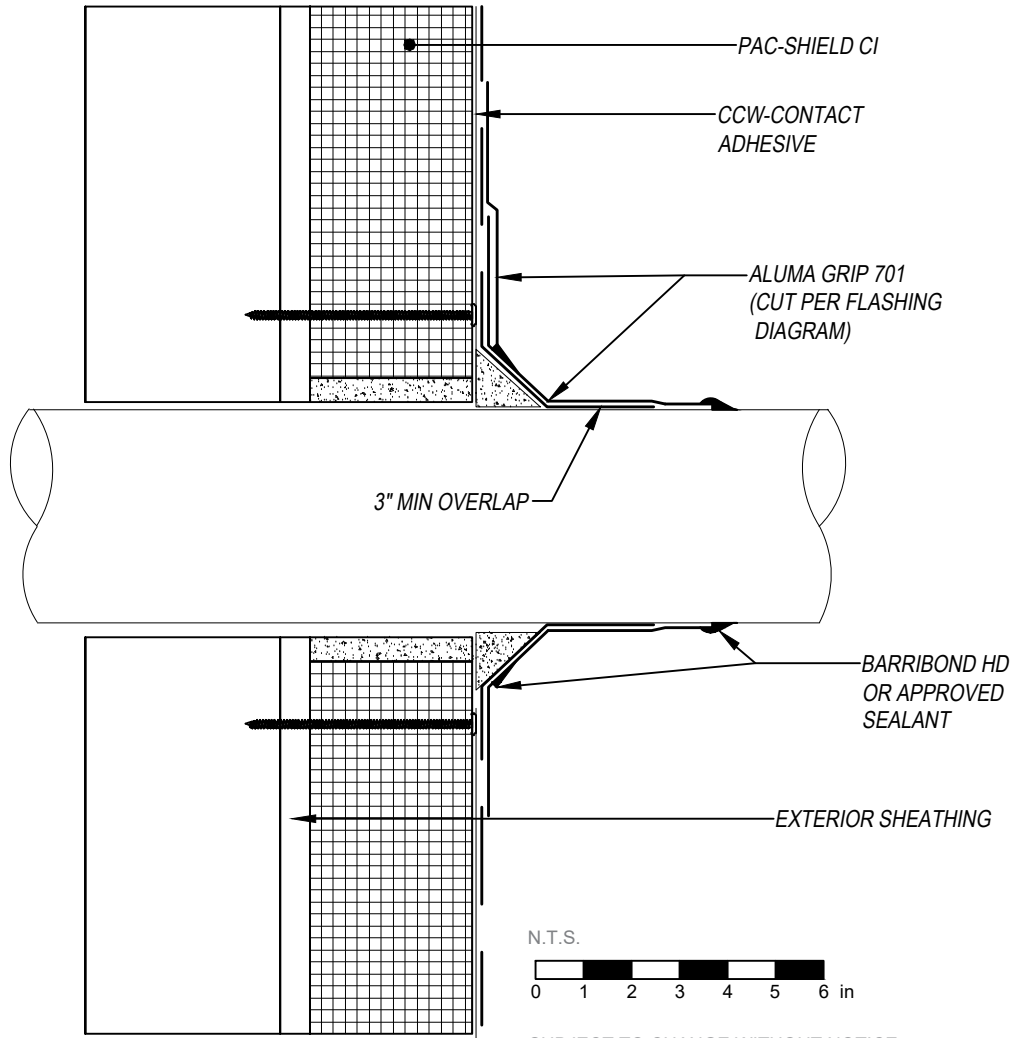
DISCLAIMER: DETAIL SHOWN FOR ILLUSTRATION PURPOSES ONLY. ACTUAL PROJECT DETAIL MAY VARY



EFFECTIVE DATE: 01-03-2023  
SUBJECT TO CHANGE WITHOUT NOTICE

DISCLAIMER: DETAIL SHOWN FOR ILLUSTRATION PURPOSES ONLY. ACTUAL PROJECT DETAIL MAY VARY

PAC-Shield CI  
**PIPE AND PENETRATION**  
PAC-Shield CI CONTINUOUS POLYISO INSULATION  
PAC-Shield CI / ALUMA GRIP 701 PENETRATION FLASHING DETAIL



SUBJECT TO CHANGE WITHOUT NOTICE

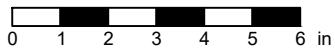
DISCLAIMER: DETAIL SHOWN FOR ILLUSTRATION PURPOSES ONLY. ACTUAL PROJECT DETAIL MAY VARY

PAC-Shield CI VP-SA WRB  
**TPO/WRB TIE-IN**  
 PAC-Shield CI WOOD COMPOSITE  
 CONTINUOUS POLYISO INSULATION  
 PAC-Shield CI VP-SA WRB  
 VAPOR PERMEABLE, SELF ADHERING AND WATER RESISTIVE BARRIER

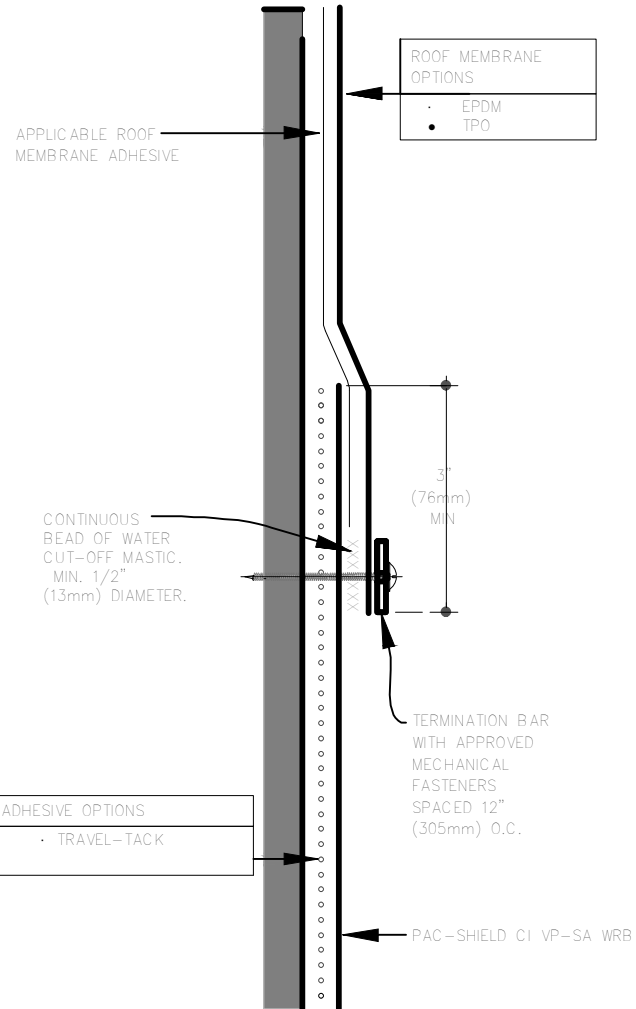
INSTALLATION STEPS:

- 1: APPLY APPROPRIATE ROOF MEMBRANE BONDING ADHESIVE OVER SUBSTRATE AND CONTINUE IT ONTO PREVIOUSLY INSTALLED HUNTER XCI VP-SA WRB 2" (51mm) AND ALLOW IT TO FLASH OFF ACCORDING TO SPECIFIC ADHESIVE INSTALLATION INSTRUCTIONS.
- 2: INSTALL EPDM/TPO ROOF MEMBRANE, EXTENDING IT A MINIMUM OF 3" (76mm) OVER THE PREVIOUSLY INSTALLED HUNTER XCI VP-SA WRB. CUT ROOF MEMBRANE AS STRAIGHT AS POSSIBLE TO HELP WITH ALIGNMENT OF TERMINATION BAR. ROLL OVERLAP WITH 2" HAND ROLLER TO ENSURE FULL ADHESION. ENSURE THE LAST 1" (26mm) OF THE ROOF MEMBRANE IS NOT ADHERED TO ALLOW APPLICATION OF WATER CUT-OFF MASTIC HIGHLIGHTED IN STEP 3.
- 3: APPLY A CONTINUOUS BEAD OF WATER CUT-OFF MASTIC A MINIMUM OF 1/2" (13mm) IN DIAMETER BETWEEN THE FACE OF THE VP-SA WRB AND UNDERSIDE OF THE SINGLE-PLY ROOF MEMBRANE. MASTIC SHALL BE APPLIED DIRECTLY IN LINE WITH PLANNED TERMINATION BAR LOCATION.
- 4: WHILE MASTIC IS STILL WET, INSTALL TERMINATION BAR OVER SINGLE-PLY MEMBRANE, SANDWICHING THE MASTIC BETWEEN THE ROOF MEMBRANE AND THE VP-SA WRB. TERMINATION BAR SHALL BE FASTENED WITH APPROVED FASTENERS SPACED A MINIMUM OF 12" (305mm) ON CENTER. FASTENERS SHALL PENETRATE THROUGH THE BEAD OF WATER CUT-OFF MASTIC TO ENSURE A WATER AND AIR TIGHT SEAL.

N.T.S.



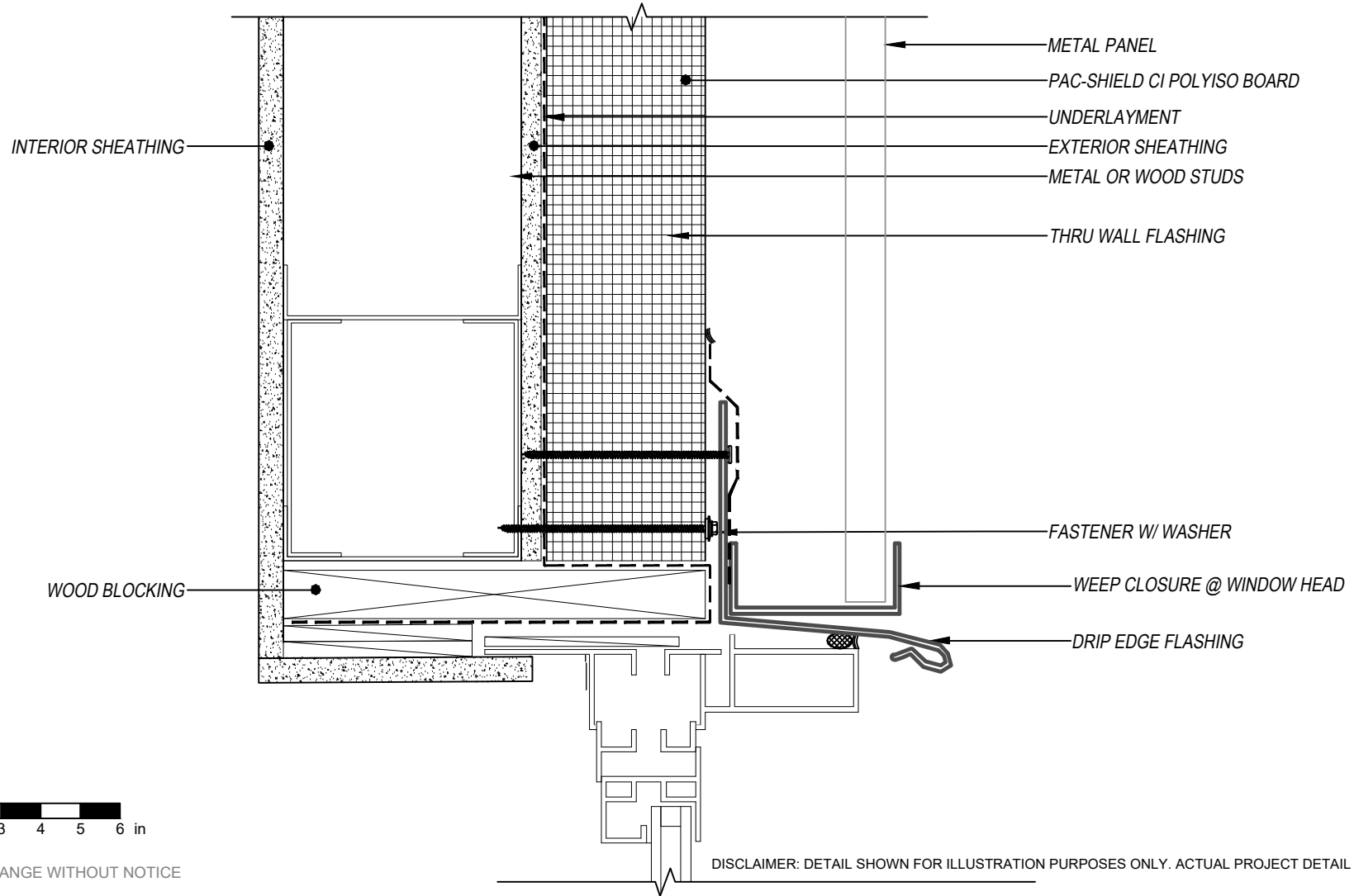
SUBJECT TO CHANGE WITHOUT NOTICE



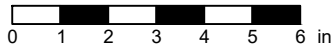
CCW CONTACT ADHESIVE OPTIONS	
• CAV-GRIP	• TRAVEL-TACK
• 702 WB	

DISCLAIMER: DETAIL SHOWN FOR ILLUSTRATION PURPOSES ONLY. ACTUAL PROJECT DETAIL MAY VARY

PAC-Shield CI PLY  
**PUNCHED INLINE WINDOW HEAD DETAIL**  
PAC-Shield CI POLYISO NON-COMPOSITE  
CONTINUOUS INSULATION OVER WRB WITH SHEATHING  
EXTERIOR CLADDING NON-MASONRY



SCALE: 3" = 1'-0"



SUBJECT TO CHANGE WITHOUT NOTICE

DISCLAIMER: DETAIL SHOWN FOR ILLUSTRATION PURPOSES ONLY. ACTUAL PROJECT DETAIL MAY VARY