

PAC-750 SOFFIT

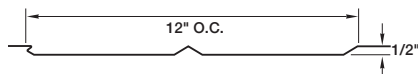
MATERIALS

.032 aluminum

SPECS

12" O.C.

1/2" High



PRODUCT FEATURES

- ▶ Three profiles available
- ▶ Perforation available for ventilation on aluminum only
- ▶ Roll-formed to exact lengths
- ▶ Matching "J" trim available
- ▶ 35-year non-prorated finish warranty

MATERIAL

- ▶ 34 stocked colors (.032 aluminum)

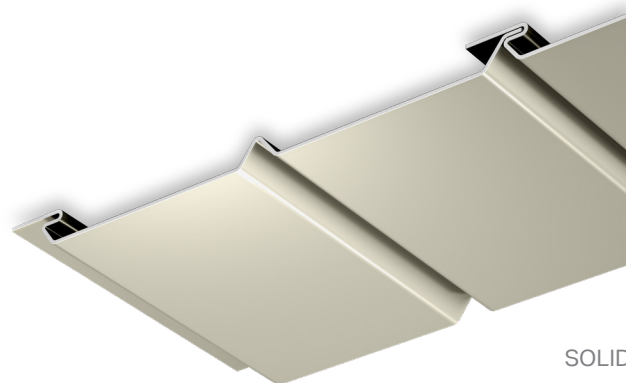
FLORIDA BUILDING PRODUCT APPROVALS

Please refer to pac-clad.com or your local factory for specific product approval numbers for soffit panels.

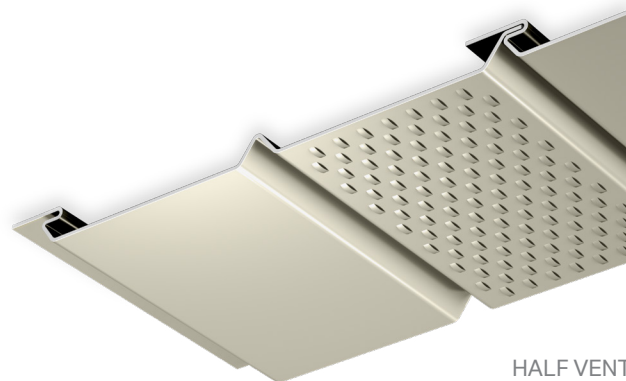
OPEN AIR PERCENTAGES FOR PAC-750

(these percentages are nominal and may vary per profile)

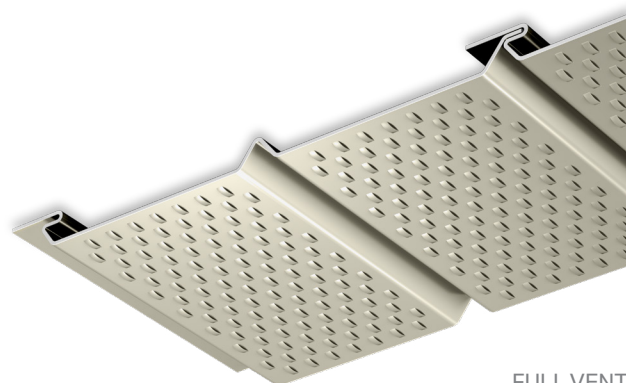
- ▶ Half vented - 6%
- ▶ Full vented - 12%



SOLID



HALF VENT



FULL VENT