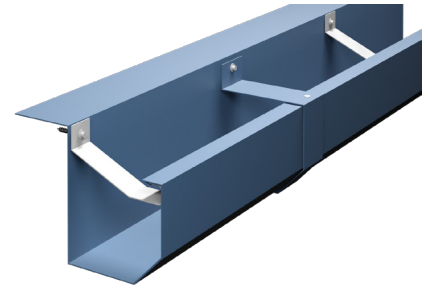


# PAC-TITE GOLD GUTTER IGG-2

## SUPERIOR ROOF DRAINAGE WITH GT-1 TESTING

PAC-Tite Gold Gutters are top-of-the-line, offering easy installation, outstanding performance and an attractive appearance. They include a 2" wide external wind strap to be installed every 6' and gutter straps every 24" O.C. to comply with the ANSI/SPRI GT-1 Standard. They also feature a unique, heavy aluminum gutter strap design that eliminates the need for drilling and riveting. The free-floating, hook-in strap allows for full thermal movement of the gutter. Offered with an optional roof flange or slotted drain bars for ballast retention, PAC-Tite Gold Gutters offer maximum roof drainage and application time in half with this one-of-a-kind edge metal solution.



## PAC-TITE GOLD GUTTER BENEFITS

- ▶ ANSI/SPRI GT-1 tested to comply with the Standard for Gutter Systems
- ▶ FM Approved for wind uplift protection
- ▶ Variety of colors, sizes and materials
- ▶ Easy installation and decreased labor costs
- ▶ Prefabricated miters and accessories to eliminate the need for field fabrication
- ▶ Specially fabricated products are available to meet the unique needs of each project
- ▶ Factory fabricated miters provide a cleaner, more aesthetically pleasing appearance. This eliminates the need for field fabrication, providing time and labor savings
- ▶ All gutter straps are included and will arrive to the job site with the product

## COLORS

Choose among a wide range of standard colors and finishes that meet your job requirements. A 35-Year Kynar 500® Finish Warranty is included on coil-coated standard colors. Custom post-coated Kynar 500® colors are available (on aluminum substrate only) with an included 10-Year Kynar 500® Finish Warranty or a 20-Year Kynar 500® Finish Warranty is available upon request.

Anodized finishes are also available. Please email Technical Services regarding pricing for Anodized finishes.

## EFFICIENT DESIGN

- ▶ Wind straps to be installed every 6 feet and gutter hangers to be installed every 24" on center
- ▶ Its heavy gauge gutter straps securely support larger volumes of water, as well as extreme snow and icing conditions and is manufactured to rigid tolerances and furnished per required drainage capacity/size
- ▶ Adapts easily to optional drainage bars or flow through gravel stops
- ▶ Pre-punch holes in the gutter eliminate the need for drilling; making for easier installation which accommodates the thermal expansion/contraction of the gutter
- ▶ Provided in 12'-0" lengths for quicker installation and lower labor costs.
- ▶ Fastening holes are slotted to allow for proper thermal movement of the materials and ensure correct fastener placement and spacing

## TESTING

- ▶ ANSI/SPRI GT-1 tested to comply with the Standard for Gutter Systems
- ▶ Factory Mutual approved for wind uplift protection.

### MATERIAL

Gutters can be manufactured in the following materials.

- ▶ 24 ga. steel
- ▶ .050" aluminum
- ▶ .040" aluminum
- ▶ .063" aluminum

### SIZES

Gutters can be manufactured in the following sizes. Sizes vary by material.

- ▶ 6", 7", 8", 9"