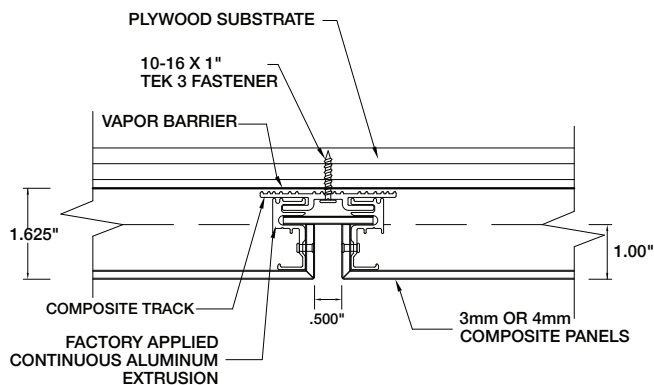
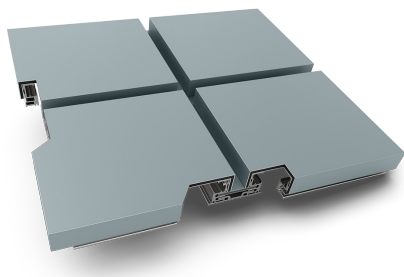
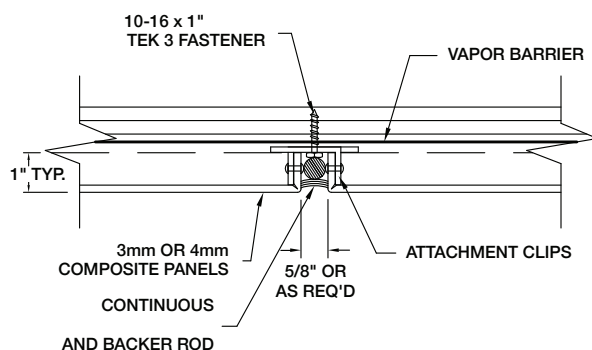
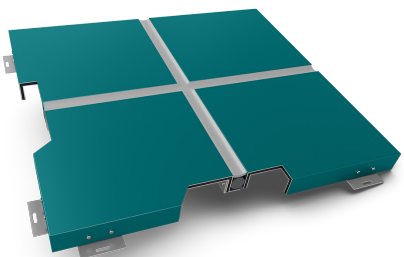


COMPOSITE WALL PANELS

PAC-3000 RS



PAC-3000 CS



PRODUCT FEATURES

- ▶ Available in a wide variety of non-PAC-CLAD colors and finishes
- ▶ Consult Petersen rep for color options (extra fee applies for PAC-CLAD colors)
- ▶ Precise fabrication to meet exacting tolerances
- ▶ Rout-and-return fabrication
- ▶ Welded corners available

MATERIALS

- ▶ 3mm, 4mm, 6mm – Composite
- ▶ .063 - .125 Mill Finish Aluminum
- ▶ Zinc
- ▶ Stainless steel
- ▶ Anodized aluminum

TESTS

- ▶ ASTM E283*
 - ▶ ASTM E330*
 - ▶ ASTM E331*
- * Composite material only