

# SNAP-ON BATTEN PANEL

## MATERIALS

.032 aluminum

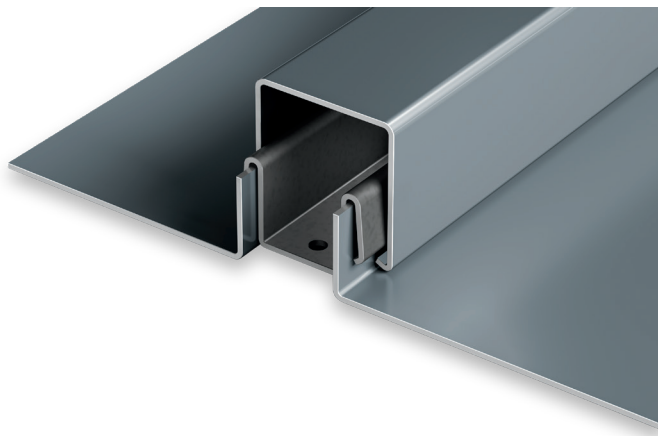
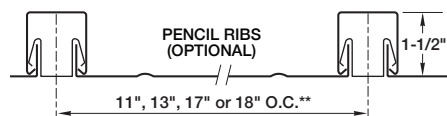
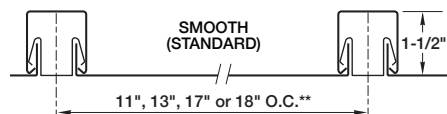
24 gauge steel

## SPECS

11", 13", 17"

1-1/2" HIGH

OR 18" O.C.



### PRODUCT FEATURES

- ▶ Ideal for transition roofs
- ▶ Pencil ribs available
- ▶ 35-year non-prorated finish warranty
- ▶ Panel lengths up to 35'

### MATERIAL

- ▶ 24 gauge steel
- ▶ .032 aluminum
- ▶ Galvalume Plus available

### UL CLASSIFICATION

- ▶ UL-1897 wind uplift
- ▶ UL-790 Class A fire rated
- ▶ UL-263 fire resistance rated

### ASTM TESTS

- ▶ ASTM E283/1680 tested
- ▶ ASTM E331/1646 tested

### FLORIDA BUILDING PRODUCT APPROVALS

Please refer to [pac-clad.com](http://pac-clad.com) or your local factory for specific product approval numbers for Snap-On Panels.

A complete specification is available online at [pac-clad.com](http://pac-clad.com).