

Highline S1

PRECISION SERIES WALL PANELS

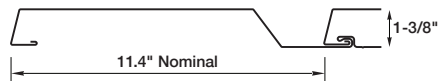
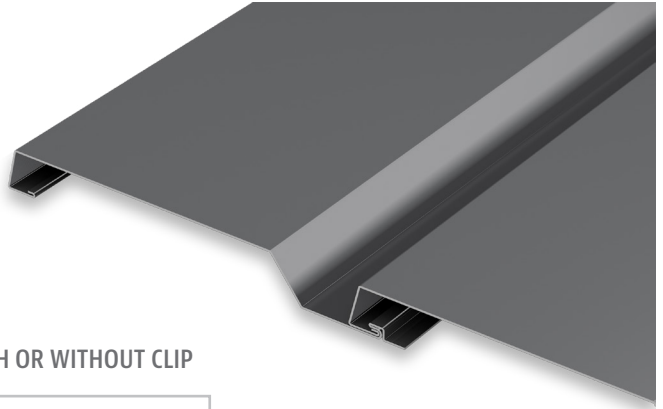
MATERIALS

.032 aluminum	24 gauge steel
.040 aluminum	22 gauge steel
.050 aluminum	

SPECS

11.4" Wide* 1-3/8" High

Note: Minimum panel length is 5'



AVAILABLE WITH OR WITHOUT CLIP



PRODUCT FEATURES

- ▶ No-clip panel, or clip installation for expansion/contraction
- ▶ Panel depth of 1-3/8"
- ▶ Cost-effective installation
- ▶ Horizontal or vertical installation
- ▶ Panel lengths:
30' maximum for steel;
22' maximum for aluminum on the thru-fastened leg; longer lengths available on clip panels

MATERIAL

- ▶ 24 gauge steel
- ▶ 22 gauge steel
- ▶ .032 aluminum
- ▶ .040 aluminum
- ▶ .050 aluminum
- ▶ Galvalume Plus available

TESTS

- ▶ ASTM E330
- ▶ ASTM E283
- ▶ ASTM E331
- ▶ AAMA 501.1-05-B1, B2, C2, S1
- ▶ ASTM 1592
- ▶ ICC ES-5839

FLORIDA BUILDING PRODUCT APPROVALS

Please refer to pac-clad.com or your local factory for specific product approval numbers for Precision Series panels.

Note: Line drawings may not be to scale.

*widths are nominal



PAC-CLAD® is a registered trademark of Petersen Aluminum Corporation. 7/26



PAC-CLAD.COM | 800 PAC CLAD