

PAC-TITE GUTTER AND DOWNSPOUT SYSTEMS

The design of the PAC-Tite Gutter and Downspout Systems line improves water management performance while complementing a building's aesthetic qualities. Custom engineering, such as the heavy aluminum gutter strap design, also promotes ease of installation and helps the gutter and downspout systems withstand harsh environments. Petersen's PAC-Tite line is the only system that's Factory Mutual approved. It also features ANSI/SPRI GT-1 compliance.

GUTTERS

PAC-Tite Gold gutters offer easy installation, outstanding performance and an attractive appearance. The products include a 2-in. wide external wind strap every 6 feet and gutter hangers every 24 in. O.C. to comply with the ANSI/SPRI GT-1 Standard. The unique, heavy aluminum gutter hanger is designed to eliminate the need for drilling and riveting and allows for full thermal movement of the gutter. Offered with an optional roof flange or slotted drain bars for ballast retention, PAC-Tite Gold gutters offer maximum roof drainage and ease of installation in a one-of-a-kind edge metal solution.

Benefits include:

- ▶ ANSI/SPRI GT-1 tested to comply with the standard for gutter systems
- ▶ FM-approved for wind uplift protection

- ▶ Variety of colors, sizes and metal gauges
- ▶ Easy installation and decreased labor costs
- ▶ Prefabricated miters and accessories to eliminate the need for field fabrication

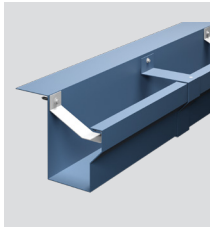
DOWNSPOUTS

The PAC-Tite industrial downspout is available in a variety of standard sizes, or it can be fabricated to meet specific job requirements. The open-face design makes clearing out debris an easy task. Downspouts are manufactured with simple connection configurations and include three attachment straps per 12-foot section, which enables fast and easy installation.

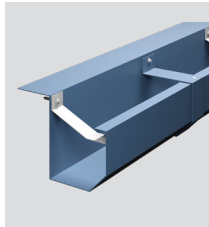
SCUPPER, COLLECTOR BOX

The PAC-Tite Gutter and Downspout Systems line includes a variety of custom-designed scuppers and collector boxes that meet performance requirements that architects and contractors want. Their unique design provides maximum security and performance to protect against leaks, and is a decorative and functional means of water control.

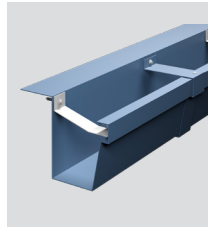
GUTTERS



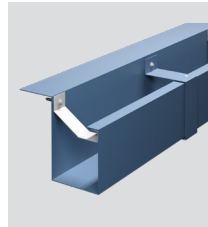
PAC-TITE Gold Gutter IGG-1



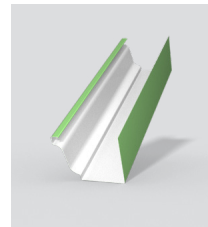
PAC-TITE Gold Gutter IGG-2



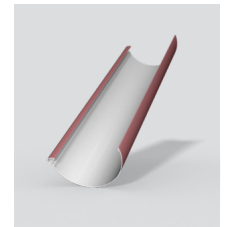
PAC-TITE Gold Gutter IGG-3



PAC-TITE Gold Gutter IGG-B

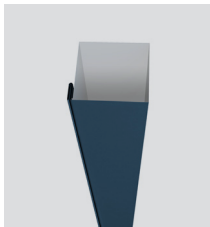


PAC-TITE LT K-Style Gutter

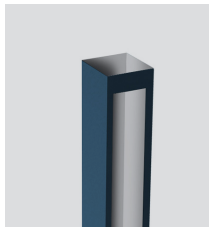


PAC-TITE LT Half Round Gutter

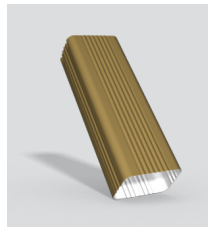
DOWNSPOUTS



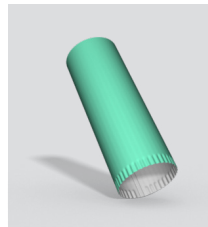
Industrial Downspout (Closed)



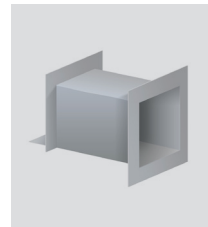
Industrial Downspout (Open)



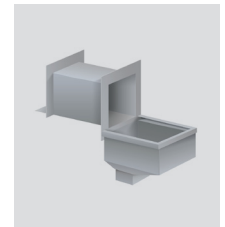
Corrugated Rectangular Downspout



Round Downspout



Thru-Wall Scupper



Thru-Wall Collector Box

SCUPPER, COLLECTOR BOX