



## **PERFORATED METAL**

for architectural flair

# Perforated Metal



*Note: Images of children are behind the perforated metal.*

Petersen offers perforation of select PAC-CLAD aluminum wall panels and flat sheet. Perforated metal can provide a contrasting look with any non-perforated metal to create visual interest on any project. Architects can specify perforated metal to diffuse light, air or sound, or simply for architectural flair. Typical applications include equipment screens, partitions, sign panels,

parking decks, guards, interior acoustical applications and enclosures of any kind.

Perforation is available in a nearly endless combination of hole sizes, spacing and open space percentages to complement virtually any architectural design or need. Perforation options will vary by panel profile and metal thickness; consult factory for details.

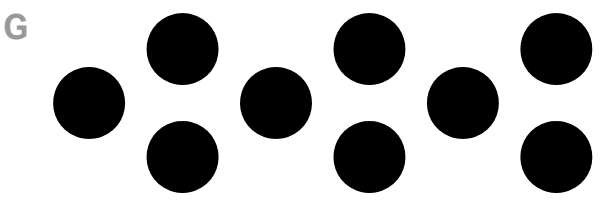
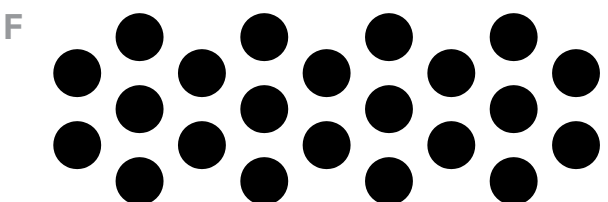
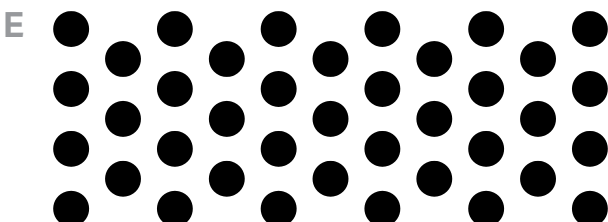
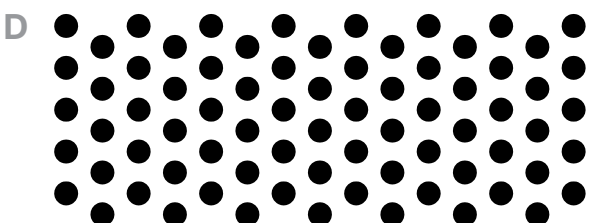
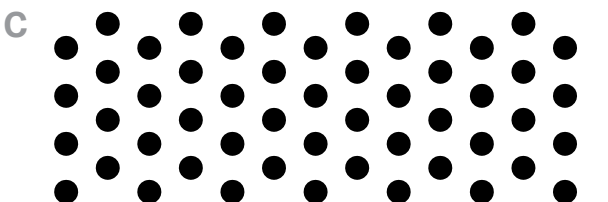
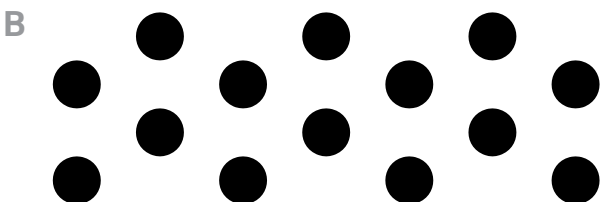
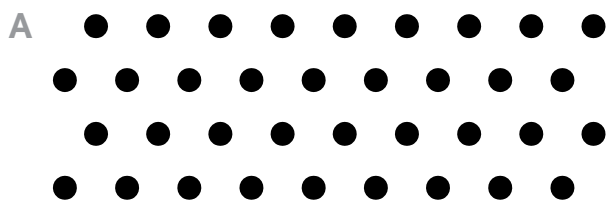
For availability details match the letters next to each image on the center insert with the letters in the chart below.

PATTERN SPECS				AVAILABLE ROLL-FORMED PANELS								SHEET
	DIAMETER	CENTERS (staggered)	OPEN AREA	FLUSH/ REVEAL	HWP	HIGHLINE	BOX RIB	CORRUGATED	7.2 PANEL	R-36	M-36	
a	1/8" Round	0.324"	13.5%	**	✓	✓	✓	✓	✓	✓	✓	✓
b	1/4" Round	1/2"	23%	**	✓	✓	✓	✓	✓	✓	✓	✓
c	1/8" Round	1/4"	23%	**	✓	✓	✓	✓	✓	✓	✓	✓
d	1/8" Round	7/32"	30%	**	✓	✓	✓	✓	✓	✓	✓	✓
e	3/16" Round	5/16"	33%	**	✓	✓	✓	✓	✓	✓	✓	✓
f	1/4" Round	3/8"	40%	**	✓	✓	✓	✓	✓	✓	✓	✓
g	3/8" Round	9/16"	40%	**	✓	✓	✓	✓	✓	✓	✓	✓

✓ Available in .032, .040 and .050 roll-formed products | \*\* Available in .032 and .040 roll-formed products

Consult local factory for additional pattern options not shown on the above chart.

Notes: □ Extra charges are applied for perforation □ Steel will not be perforated □ Limitations might apply for certain perforation specs; check with Petersen facility for details and options.



# Project Information

## INSIDE, left page

Moving Everest Charter School, Chicago, IL  
Installing contractor: WBR Roofing  
Architect: Team A  
General contractor: Novak  
Owner: By The Hand  
Photographer: Scott Bell  
Profiles: 7/8-in. Corrugated, perforated 7/8-in. Corrugated  
Color: Charcoal

## INSIDE, right page, top

Ballet Memphis, Memphis, TN  
Installing contractor: Ralph Jones Sheet Metal  
Architect: archimania  
General contractor: Grinder Tabor Grinder  
Photographer: archimania  
Profiles: Snap-Clad, perforated Snap-Clad, Corrugated,  
perforated Corrugated  
Colors: Zinc, natural copper material

## INSIDE, right page, bottom

Grammy Museum of Mississippi, Cleveland, MS  
Installing contractor: Ralph Jones Sheet Metal  
Architect: Dale Partners Architects  
Owner: Cleveland Music Foundation  
Photographer: hortonphotoinc.com  
Profiles: ½-in. Corrugated, Tite-Loc Plus,  
Flush Panels, perforated 7.2 Panel  
Colors: Weathered Zinc, Bone White, custom color Olive

## BACK COVER, top

The Charles Condos, Atlanta  
Installing contractor: Pierre Construction Group  
Architect: Lord Aeck Sargent  
Distributor: Commercial Roofing Specialties  
General contractor: Brasfield and Gorrie  
Owner: The Charles Master and Residential Condo Associations Inc.  
Photo: hortonphotoinc.com  
Profiles: 7.2 perforated  
Color: Weathered Zinc

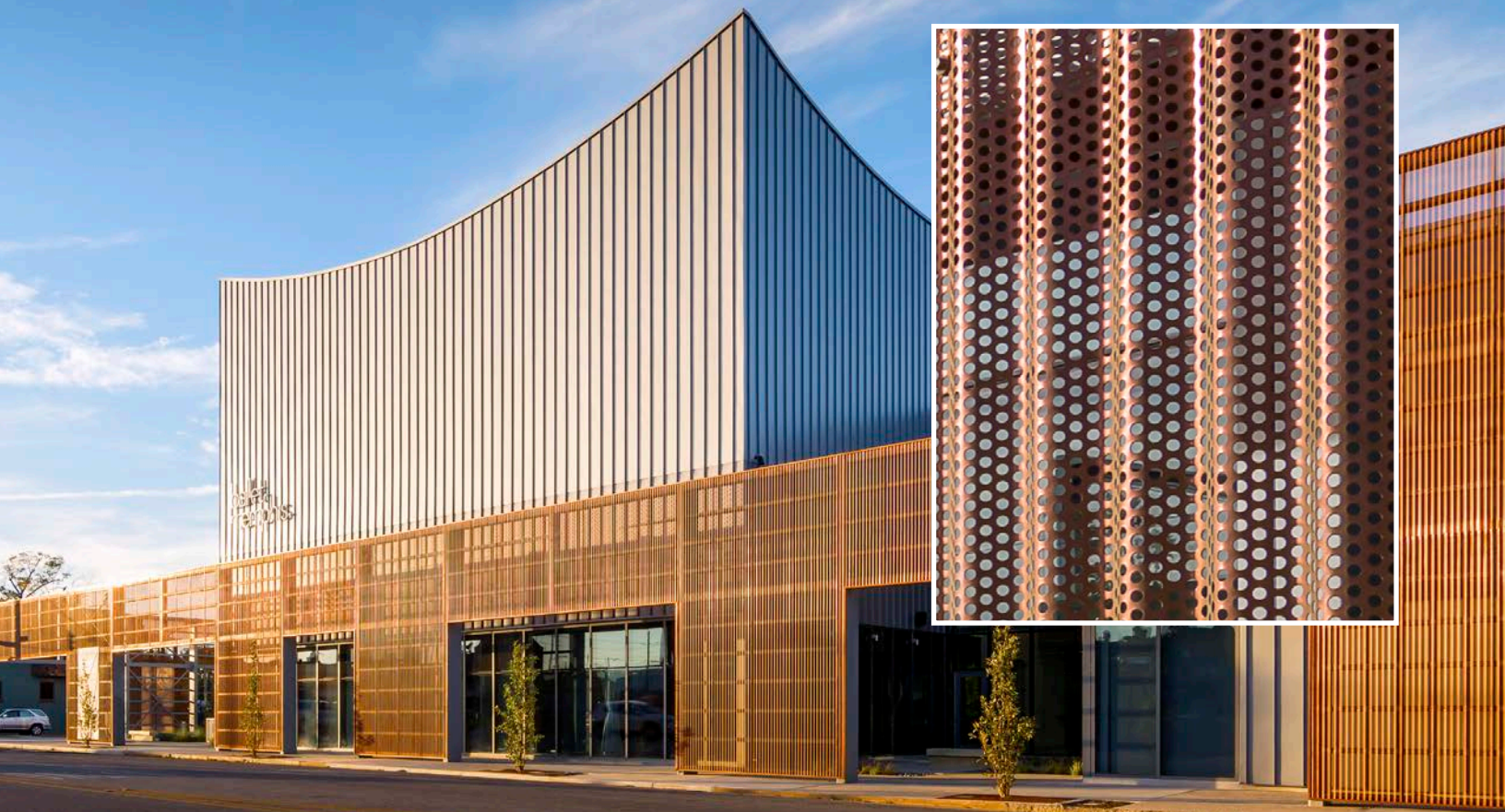
## BACK COVER, bottom left

Sunrise Mainline Toll Plaza, Ft. Lauderdale, FL  
Owner: Florida Turnpike Enterprise  
Lead Contractor: MCM Corp.  
Contractor: Allied Architectural Metals  
Design: RS&H  
Profile: 7/8-in. Corrugated panels, perforated .125 plate aluminum  
Color: Silver Metallic

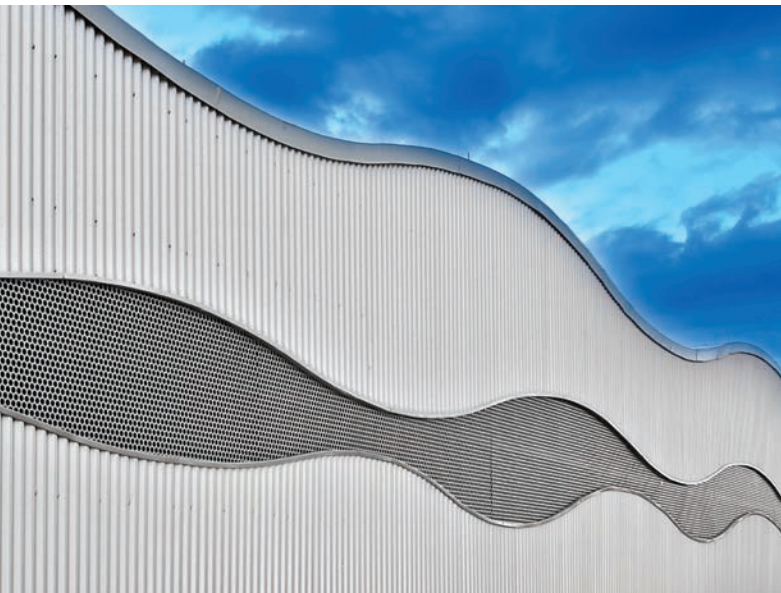
## BACK COVER, bottom right

Wichita State University Partnership Building 7, Wichita, KS  
Installing contractor: Mahaney Group  
Architect: GLMV Architecture  
General contractor: Crossland Construction Co.  
Owner: MWCB LLC  
Photo: Alan Blakely  
Profiles: Reveal Panel, 7.2 Panel  
Colors: Graphite, Cityscape









HQ: 1005 Tonne Road  
Elk Grove Village, IL 60007  
P: 800-PAC-CLAD  
F: 800-722-7150

9060 Junction Drive  
Annapolis Junction, MD 20701  
P: 800-344-1400  
F: 301-953-7627

10551 PAC Road  
Tyler, TX 75707  
P: 800-441-8661  
F: 903-581-8592

102 Northpoint Parkway  
Acworth, GA 30102  
P: 800-272-4482  
F: 770-420-2533

1800 S. 7th Ave., Suite 130  
Phoenix, AZ 85007  
P: 833-750-1935  
F: 602-254-6504

1885 Station Parkway NW, Suite B  
Andover, MN 55304  
P: 877-571-2025  
F: 866-901-2935