



**PAC-CLAD®**

P E T E R S E N

A **CARLISLE** COMPANY

# Color Guide



▲ ALMOND



▲ SANDSTONE



▲ AGED BRONZE



▲ DARK BRONZE



MIDNIGHT BRONZE



▲ MANSARD BROWN



▲ MUSKET GRAY



▲ CHARCOAL



ONYX (fka Matte Black)



TRADITIONAL BLACK



BURGUNDY



▲ CARDINAL RED



BERKSHIRE BLUE



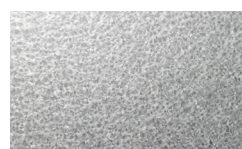
AWARD BLUE



FOREST GREEN



▲ EVERGREEN

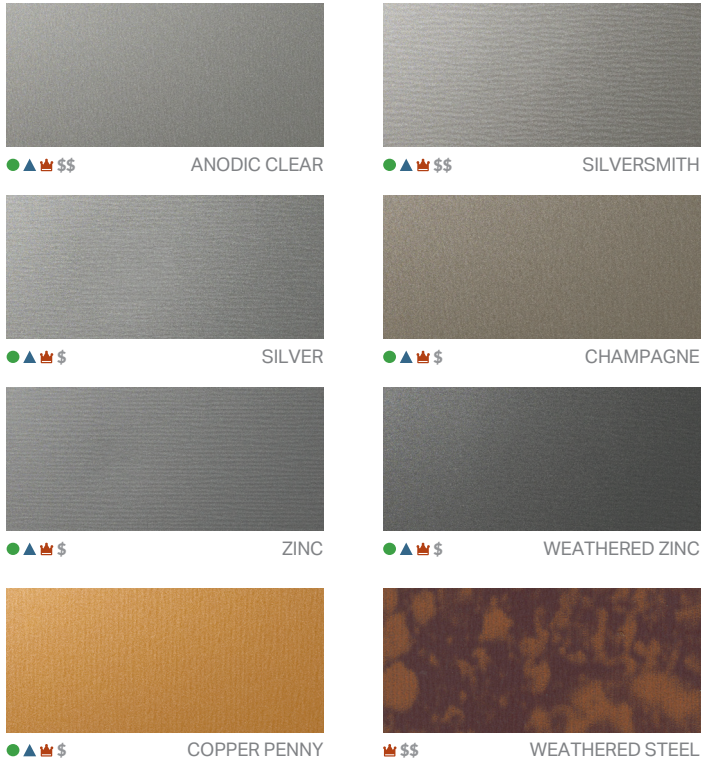


GALVALUME PLUS



HARTFORD GREEN

# Premium Colors



# Timber Series Wood Grain

Available in 24 gauge steel and .032 aluminum.



70% polyvinylidene fluoride (PVDF) pre-finished steel and aluminum for all architectural cladding applications.

● Metallic Colors    \$ Pricing    ▲ Cool Colors    👑 Premium Colors

See back for color performance and availability chart.

# Standard Colors



IL: 800 PAC CLAD    TX: 800 441 8661    MD: 800 344 1400  
AZ: 833 750 1935    GA: 800 272 4482    WA: 833 750 1935

[PAC-CLAD.COM](http://PAC-CLAD.COM)

# Performance and Availability

PAC-CLAD STANDARD COLORS	REFLECTIVITY	EMISSIVITY	3 YEAR EXPOSURE	SRI	STEEL			ALUMINUM			20-IN. COIL	
					24 GA.	22 GA.	.032	.040	.050	.063	24 GA.	.032
AGED BRONZE	0.29	0.87	0.27	29	✓						✓	
ALMOND	0.63	0.85	0.55	75	✓	✓	✓	✓	✓			
ANTIQUE BRONZE <b>NEW</b>	0.28	0.86	N/A	27	✓		✓	✓			✓	✓
AWARD BLUE †	0.25	0.86	0.23	24	✓		✓					
BERKSHIRE BLUE *	0.29	0.86	0.27	29	✓							
BLACK (FKA BLACK ALUMINUM)	0.05	0.90	0.04	0	✓	✓	✓	✓	✓	✓	✓	✓
BONE WHITE	0.70	0.86	0.69	85	✓	✓	✓	✓	✓	✓	✓	✓
BUCKSKIN <b>NEW</b>	0.37	0.86	N/A	39	✓		✓				✓	✓
BURGUNDY	0.24	0.86	0.13	22	✓						✓	
BURNISHED SLATE	0.32	0.86	0.31	33	✓						✓	
CARDINAL RED †	0.44	0.86	0.44	49	✓		✓				✓	✓
CHARCOAL	0.30	0.87	0.30	31	✓		✓	✓	✓		✓	✓
CITYSCAPE	0.05	0.87	0.50	57	✓	✓	✓	✓	✓		✓	✓
CLASSIC BRONZE * <b>NEW</b>	0.27	0.87	N/A	27	✓						✓	
COLONIAL RED	0.34	0.87	0.31	36	✓		✓	✓	✓		✓	✓
DARK BRONZE	0.27	0.86	0.29	26	✓	✓	✓	✓	✓	✓	✓	✓
EVERGREEN	0.10	0.86	0.26	4	✓							
FOREST GREEN	0.10	0.88	0.10	5	✓		✓	✓			✓	✓
GRANITE *	0.32	0.86	0.33	33	✓	✓	✓	✓	✓			✓
GRAPHITE	0.25	0.86	0.28	24	✓						✓	
HARTFORD GREEN	0.08	0.88	0.08	3	✓			✓			✓	
HEMLOCK GREEN	0.31	0.87	0.30	32	✓		✓				✓	
INKWELL * <b>NEW</b>	0.27	0.86	N/A	26	✓						✓	
INTERSTATE BLUE	0.16	0.87	0.15	12	✓		✓		✓		✓	✓
IRON ORE <b>NEW</b>	0.27	0.87	N/A	27	✓		✓	✓	✓		✓	✓
MANSARD BROWN	0.31	0.87	0.31	32	✓	✓	✓	✓	✓		✓	✓
ONYX (fka MATTE BLACK STEEL)	0.26	0.85	0.25	24	✓	✓					✓	
MEDIUM BRONZE	0.30	0.88	0.29	31	✓	✓	✓	✓	✓	✓	✓	✓
MIDNIGHT BRONZE	0.06	0.90	0.06	1	✓			✓			✓	
MILITARY BLUE	0.31	0.87	0.30	32	✓		✓				✓	✓
MUSKET GRAY	0.32	0.87	0.31	33	✓	✓	✓		✓		✓	✓
PACIFIC BLUE (fka SLATE BLUE)	0.28	0.87	0.27	28	✓		✓				✓	✓
PATINA GREEN	0.33	0.86	0.32	34	✓							
REGAL WHITE <b>NEW</b>	0.66	0.86	N/A	79	✓		✓	✓			✓	✓
SANDSTONE	0.48	0.87	0.48	55	✓	✓	✓	✓	✓	✓		
SIERRA TAN	0.38	0.85	0.31	40	✓	✓	✓	✓	✓		✓	✓
SLATE GRAY	0.41	0.87	0.37	45	✓	✓	✓	✓	✓		✓	✓
STONE WHITE	0.69	0.86	0.67	84	✓	✓	✓	✓	✓	✓		
TEAL	0.31	0.87	0.32	32	✓		✓					
TERRA COTTA	0.35	0.87	0.33	37	✓		✓		✓		✓	✓
TRADITIONAL BLACK * <b>NEW</b>	0.28	0.87	N/A	28	✓		✓				✓	✓
<b>PAC-CLAD PREMIUM COLORS</b>												
ANODIC CLEAR	0.53	0.81	0.31	60				✓				
CHAMPAGNE	0.40	0.78	0.49	40	✓		✓	✓	✓			✓
COPPER PENNY	0.50	0.86	0.52	57	✓		✓	✓			✓	✓
SILVER	0.47	0.82	0.46	52	✓	✓	✓	✓	✓		✓	✓
SILVERSMITH	0.54	0.81	0.32	61				✓				
WEATHERED STEEL	0.26	0.86	N/A	25	✓							
WEATHERED ZINC	0.24	0.83	0.46	21	✓	✓	✓		✓		✓	✓
ZINC	0.33	0.84	0.38	33	✓		✓	✓				✓
<b>CLEAR-COAT ACRYLIC FINISH (NON-PVDF)</b>												
GALVALUME PLUS	0.68	0.14	0.55	57	✓	✓					✓	

PAC-CLAD Premium finishes are available from stock at a moderate extra cost. PAC-CLAD Copper Penny is a Non-Weathering finish. Solar Reflectance Index calculated according to ASTM E-1980. Reflectivity and solar reflectance index (SRI) values are provided by Sherwin-Williams

\* Low Gloss/Low Sheen, 70% PVDF finish † 10-year finish warranty

#### TECHNICAL DATA FOR 70% PVDF COATING:

- ▶ South Florida Exposure: Color (ASTM D 2244) - No more than 5ΔE Hunter units at 20 years; Chalk (ASTM D 4214) - Rating no less than 8 at 20 years; Film integrity - 20 years.
- ▶ Accelerated Weathering (ASTM D 4587, ASTM G 154): 5000 Hours; Chalk, per ASTM D 4214, rating of 6 or better; Color, per ASTM D 2244, < 5ΔE (Hunter Units) color change.
- ▶ Chemical/Acid Pollution Resistance (ASTM D 1308): Pass

- ▶ T-Bend (ASTM D 4145): 1T - 3T with no loss of adhesion
- ▶ Humidity Resistance (ASTM D 2247): Galvalume or HDG, 100% RH, 2000 hours - No field blisters; Aluminum, 100% RH, 3000 hours - No field blisters
- ▶ Salt Spray Resistance (ASTM B 117): Aluminum: 3000 hours, creep from scribe no more than 1/16" (2mm), no field blisters. Galvalume or HDG: 2000 hours, creep from scribe no more than 1/8" (4mm), no field blisters

- ▶ Pencil hardness (ASTM D 3363): HB - 2H
- ▶ Specular Gloss (ASTM D 523) @ 60 degrees: Typical - 20 - 35
- ▶ Abrasion Resistance (ASTM D 969): 80 Liters/Mil +/- 5 Liters
- ▶ Cross Hatch Adhesion (ASTM D 3359): No loss of adhesion
- ▶ Reverse Impact (ASTM D 2794): Galvalume or HDG, 2x metal thickness inch-pounds, no loss of adhesion; Aluminum, 1.5x metal thickness inch-pounds, no loss of adhesion
- ▶ Flame Test (ASTM E 84): Class A Coating

PAC-CLAD® is a registered trademark of Petersen Aluminum Corp. The PAC-CLAD finish is 70% polyvinylidene fluoride (PVDF). Galvalume Plus is a registered trademark of BIEC International. 1/25

SAP 614844